



Jade Leader Corp

TSXV: JADE

Our Journey and Progress in The The Jade Space

May 2025 Update

**J.P. Jutras, B.Sc Hons Geology, P.Geol
President/Director, Jade Leader Corp.**

Disclaimer

Safe Harbor

Except for the historical and present factual information contained herein, the matters set forth in this presentation, including words such as “expects”, “projects”, “plans”, “anticipates” and similar expressions, are forward-looking information that represents management of Jade Leader Corp.’s internal projections, expectations or beliefs concerning, among other things, future operating results and various components thereof or the economic performance of Jade Leader. The projections, estimates and beliefs contained in such forward-looking statements necessarily involve known and unknown risks and uncertainties, which may cause Jade Leader’s actual performance and financial results in future periods to differ materially from any projections of future performance or results expressed or implied by such forward-looking statements. These risks and uncertainties include, among other things, those described in Jade Leader’s filings with the Canadian securities authorities. Accordingly, holders of Jade Leader shares and potential investors are cautioned that events or circumstances could cause results to differ materially from those predicted. Jade Leader disclaims any responsibility to update these forward-looking statements.

Mr. Jean-Pierre Jutras, P.Geol., President of the Company, is the Qualified Person for the Company’s Jade projects as defined by National Instrument 43-101 and is responsible for the technical disclosure contained in this presentation.

Additional Disclaimer

- Jade is neither a listed or market traded commodity.
- Market prices for Jade over the last two decades appear to have fluctuated within a fairly extreme range. Price is ultimately set between seller and buyer in private transactions (outside of public auctions).
- As there are currently no precedents for such, there can be no assurance that a Resource or Reserve estimate in accordance with NI 43-101, standards for mineral disclosure, can be defined.
- There are currently no dependable estimates of supply and potential of raw materials. To date the sector remains dominantly artisanal in nature.
- The Company relies on privately developed, proprietary, unpublished exploration models in its efforts to outline and define new and existing Jade occurrences. There are no guarantees that these models will successfully lead the Company through the discovery and definition cycle for new occurrences.
- There are no assurances that even in the case of exploration success, the Company will have access to the main Jade markets on favorable terms.
- In the absence of published prices and other market information, the Company relies largely on its own research within the space, and ongoing sales data which, despite best efforts, may remain inadequate to form long term projections.

Executive Summary- Jade Leader

Recent articles and mainstream publications suggest that the international Jade market is now larger than the better known worldwide market for rough diamonds, without any participation in the space by publicly listed Companies prior to the formation of Jade Leader Corp.

Jade Leader Corp, with a Board of Directors having over 130 years of combined experience as mineral exploration geologists with proven track records of discoveries, is led by JP Jutras, B.Sc Hons Geology, P.Geol who is also an internationally recognized Jade carver and gemstone cutter with over 35 years' experience.

- Jade Leader is built on a now proven, unique proprietary geological and exploration model stemming from the last 6 years of research, technical studies and field examinations of Jade occurrences.
- Jade Leader now has a portfolio of 6 nephrite Jade hosting properties (5 in Wyoming, 1 in Washington state, USA) with pilot scale production programs completed on its 2 lead projects. Promotion of harvested Jade materials and sales began in 2022.
- All of Jade Leader's properties are located in geographical areas that have longer operating seasons, and better access and infrastructure than any established Jade producing districts elsewhere (China, Russia, Northern BC).
- Our most advanced recent discovery (Sky Zone in Wyoming) is a large, surface outcropping zone of massive jade bearing quartz epidote alteration. With approximately 0.005% of the zone sampled at surface, and 9% of marketable Jade materials recovered sold to date, early data indicates a now realized grade in excess of US\$ 1,179/tonne for the Sky Zone in the initial test area. This valuation can only increase as the company promotes the remaining 91% of the 2021 recovered Sky Jade[®] test production, seeking to increase sales.

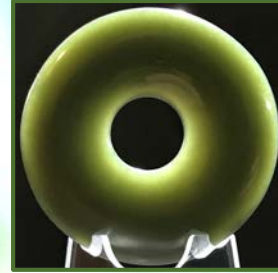
Our Jade Systems Discovered to Date

- Beginning 2017, no properties, no Jades discovered.
- Discoveries begin at the DJ project in mid 2017, and in Wyoming starting in April 2018.



Worked Jades of the DJ project,
Washington State USA, from
surface samples, beginning in
2017.

Our Jade Systems Discovered to Date



Lizard System Jades,
Wyoming, early
prospecting



Eagle System Jades,
Wyoming, early
prospecting



Our Jade Systems Discovered to Date



2019 samples



**Scorpion System Jades,
Open for expansion,
6 Km from Sky Zone**



*Scorpion black Jade necklace
centerpiece with embedded 8 mm
faceted citrine*



2024 samples

Our Jade Systems Discovered to Date



2019 sample



**Toad System Jades,
Surface system
expression: +/- 1 acre
Open for expansion
+/- 5 Km from Sky Zone**



Rough: 251 grams



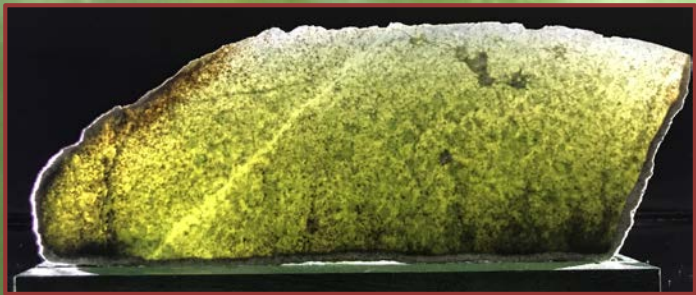
Rough: 536.5 grams



Rough: 760 grams

2024 samples

Our Jade Systems Discovered to Date



**Rabbit System
Ornamental Jades**

**22.5 Tonnes recovered
in 2019
Open for Expansion**

Sky Jade System

**230 Kg of jade materials
recovered in 2021, 180 Kg
of which is marketable
stone**

**Over \$37,000 of material
sold to date, average
realized price of US\$
1,550/Kg**

**0.005% of the mapped,
jade bearing alteration
system tested to date to
depth of around 1 meter**

**2.3+ acres surface
expression,
open for expansion**



Accomplishment Timelines

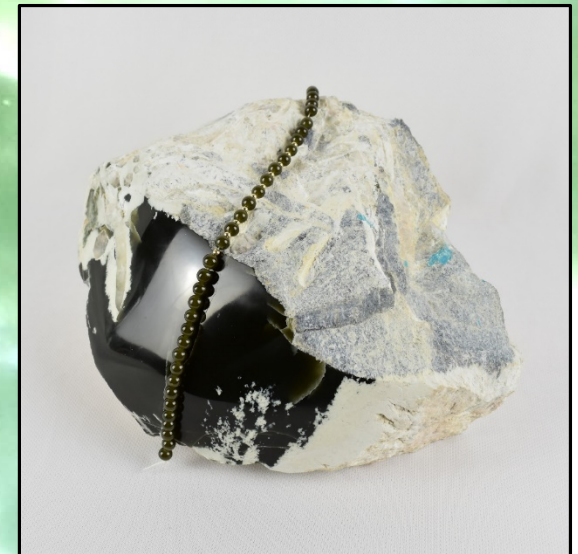
- **2017- Jade Leader begins its Jade focused exploration and acquisition Strategy.**
- **Jade Leader now has a portfolio of 6 Jade hosting properties (5 in Wyoming, 1 in Washington state, USA) with pilot scale production programs completed on its 2 lead projects. Sales and promotion of materials began in 2022.**
- **All of Jade Leader's properties are located in geographical areas that have longer operating seasons, and better access and infrastructure than any established Jade producing districts elsewhere (Russia, Northern BC).**
- **We have attracted some of the best and most qualified professionals in the gem world and Mineral dealing space with Dr. Peter K. Megaw on our Board of Directors and Dr. Robert Lavinsky of the Arkenstone and Andrew Shaw author of "Jade Life" as Advisors.**



**Jade Leader's rough and cut gem "Sky Jades©", Wyoming.
From 2021 Pilot scale sampling program generating some 230 Kg of Jade materials.**

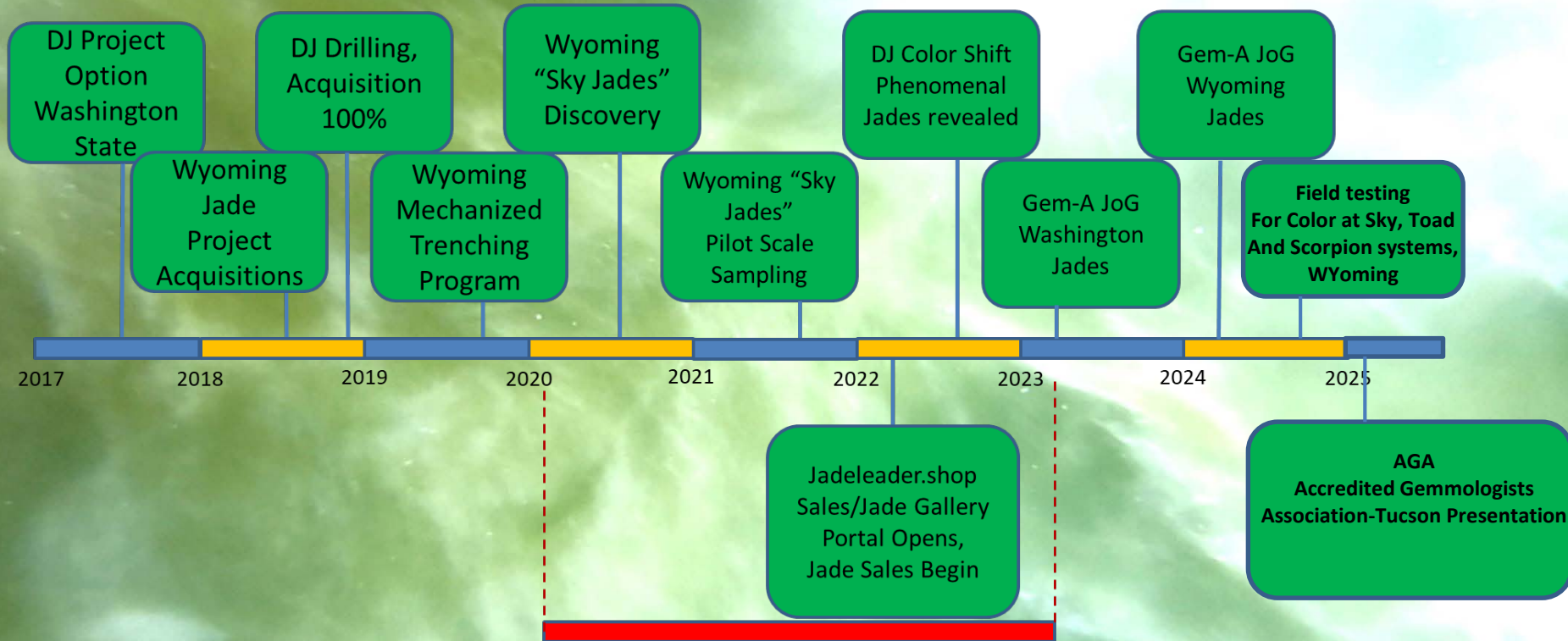
Recent Accomplishment Timelines

- Beginning in 2021, Jade Leader's President has received multiple requests from highly recognized professional organizations within the gem trade for both presentations on the topic of Jade (especially American Jades) as well as publications in leading trade publications. The organizations include the British Gemmological Association (Gem-A) through its world leading publication "*The Journal of Gemmology*", the CGA (Canadian Gemological Association), AGTA (American Gem Trade Association) and the AGA (Accredited Gemologists Association).
- Through our publication of advanced scientific, blind peer reviewed research articles and presentations, Jade Leader is building its reputation as a serious, professional and responsible source of gem materials for the industry, a key element in dealing with potential volume buyers.
- Built a social media presence through platforms including Youtube, LinkedIn and Instagram with over 274,100 views to date of various videos showing a range of content such as field activities and Jade harvesting, Jade cutting and a host of finished products to educate potential buyers and partners about our Jade material's potential and responsible sourcing activities.



Jade Leader's rough and cut gem "Sky Jades©", Wyoming.
Rough block with string of beads all cut from the Sky Zone.

Accomplishment Timelines

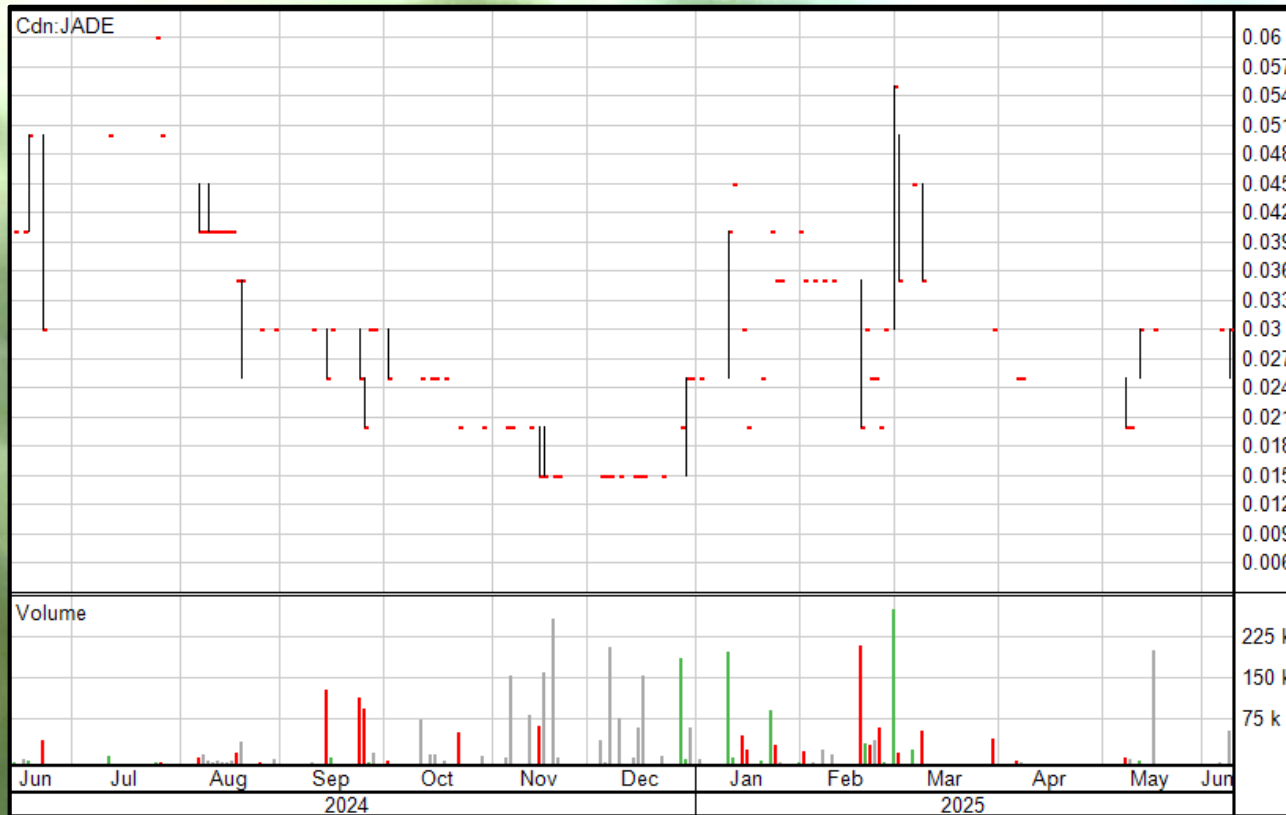


+/- Jan 2020 to January 2023, the international COVID pandemic and related control measures have strong, negative impacts on the Gem trade world wide.

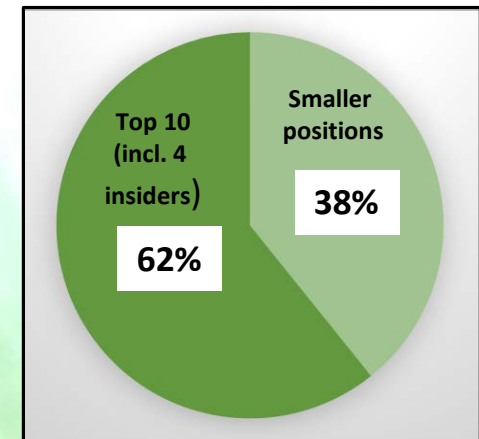
The background is an abstract, textured composition of various shades of green and blue. The colors are blended together in a way that creates a sense of depth and movement, with some areas appearing more saturated than others. The overall effect is reminiscent of a close-up of a natural surface, like a leaf or a piece of stone, or perhaps a microscopic view of a biological structure. The lighting is soft, with no harsh shadows or highlights, giving the image a calm and organic feel.

Corporate

Corporate Information



Overall Ownership



Jade Leader Corp. – TSXV : JADE (June 1, 2025)

Stockwatch.com, June 9, 2025

Shares Outstanding : 74.71 M

Fully Diluted : 78.89 M

Warrants : 1.74 M @ \$0.10
2.47 M @ \$0.06
1.61 M @ \$0.07

Options: 2.4 M (\$0.05)

Cash (May 1, 2025): +/- \$222 K

M/C: +/- \$2.24 M on o/s

Listed product on jadeleader.shop:
USD \$131,944 (CDN \$180,552)

Sold to date: +/-USD\$ 28,135 (CDN\$ 38,500)

Corporate Information



Progress in reaching Jade objectives and milestones from 2017 onwards (2020) were generally well received.

Efforts and continued success through the COVID period (Jan 2020-Jan 2023) and resulting world wide disruptions in all aspects of the Gem trade were not as well received.

Now - Various trade publications such as the American Gem Trade Association “e-prism” and the Roskin Gem News Report have both remarked a dramatic positive turnaround in the International Gem trade since January of 2023 as buyers return to a market after a 3 year absence or limited participation due to world wide uncertainties.

The diamond industry has been in free fall since early 2000’s, accelerating since 2020 due to the poorly managed introduction of synthetic diamonds across the jewelry market. Customers who have lost confidence in diamonds are now increasingly seeking natural colored stones for their unique jewelry pieces.

Jade Leader Corp is ready to participate in this Sector Resurgence, with ethically and mindfully sourced American Gem materials.

Projects/Assets

Project General Locations And Status Summary



Wyoming Jade Fields, USA

5 distinct Jade projects and Jade bearing systems identified.

Pilot scale production of marketable gem Sky Jade® at the Sky Zone.

Mineral Claims covering in excess of 2,000 acres.

DJ Project

Washington State, USA

3 identified Jade Lodes and associated Rhodonite.

Pilot scale production of marketable Jade and Rhodonite.

Mineral Claims covering in excess of 350 acres.

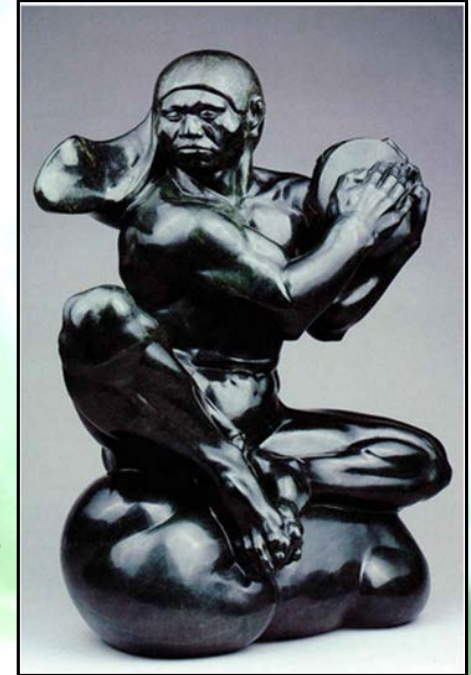
Wyoming Historical.

Active 1930s to 1980s.

Kraft Jade window, 1952, North Shore Baptist Church, Chicago. 6.5 x 3.5 feet.



**Wyoming historical black jade as a carving medium.
“Thunder”, Donal Hord, 1947.**



“Sinkankas (1959) considered Wyoming Jade to be some of the finest nephrite in the world.” (Quote from Wyoming Geological Survey, www.wsgs.wyo.gov)

Historically found at or near surface as loose (placer) Jade pieces, Jade in Wyoming supported both a significant export market to Germany, New Zealand and Taiwan, as well as a Wyoming based Jade industry from the 1940's to roughly the 1980's. In the latter part of this period, a 40+ employee shop dedicated to carving and marketing Jade was in operations in Rawlins, south of the Jade Fields.

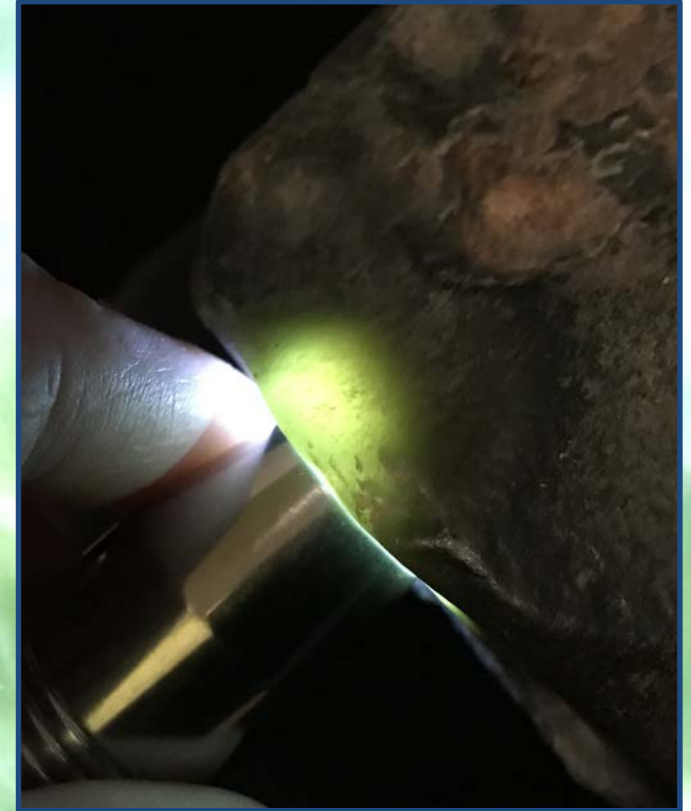
Once relatively abundant surface supplies and production eventually slowed to a trickle, not supplying enough materials to support significant further development and marketing of Wyoming Jades. ***Jade Leader Corp has now identified 5 distinct in-situ sources and systems of these historical Jades.***

“Sky Jades[©]”, In-situ Wyoming Jade Discovery

Unique stone- Jade Ventifacts/Slicks, initial clues to Sky Jade[©] Systems



Discovered September 2019. +/-26.24 pounds, 16.5" x 9.8" x 2.4-3.5"



The finest historical Wyoming jades were often found at surface as wind weathered “ventifacts” or “slicks”. It was often believed that this surface erosion ground away coarser grained and fractured parts of larger Jade pieces, exposing the finer grained “gem heart” portions of transported Jades. The gem quality Ventifact shown above was found by Jade Leader near a mountain top, leading our crew to search for a source of this material above. Unique quartz crystals embedded in the Jade led us to reconsider the likely geological context of potential sources, leading to the initial discovery of the “Sky Zone” in September of 2019.

“Sky Jades[©]”, In-situ Wyoming Jade Discovery



**Discovery outcrop,
Sky Zone. Jade and
associated quartz
crystals.**

**3.87 Kg single block,
Sky Jade[©]. Initial
test sampling, 2020.**



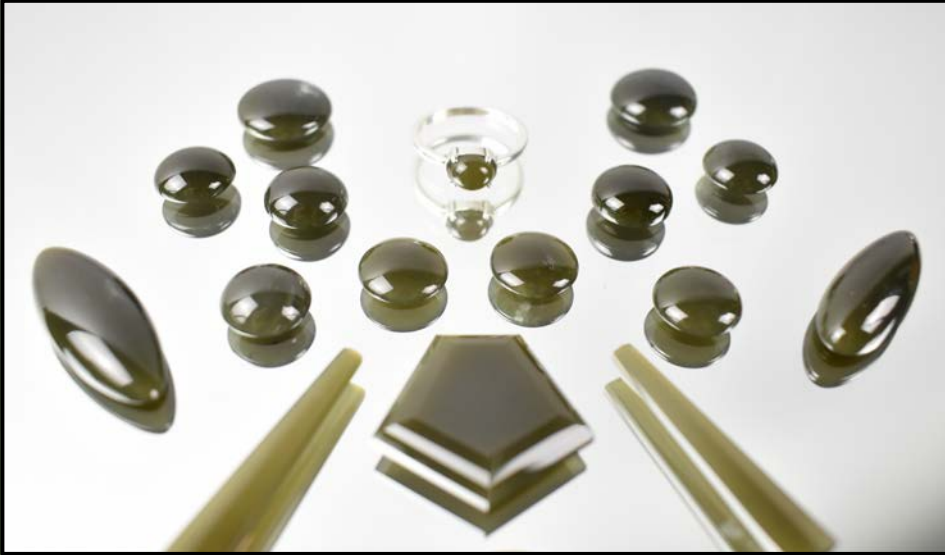
**Common “hand size”
Jade piece from main
productive Jade bearing
shear zone.**



Initially recognized in September 2019, The Sky Zone hosts consistently fine grained, “clean” and relatively uniformly colored nephrite Jade within a large alteration zone of massive quartz epidote replacement of the regional country rock. Initial test sampling was performed in 2020, where a range of samples were collected for testing and evaluation of the Jade’s characteristics (color, grain, translucency, workability).

A pilot scale mechanized bulk sampling was further conducted in September of 2021, recovering 230 Kg of Jade from 22 tonnes of host rock processed. 183 Kg of the Jade (8.3 Kg/tonne) was considered marketable as gem or specimen grade.

"Sky Jades[©]", Stone Testing



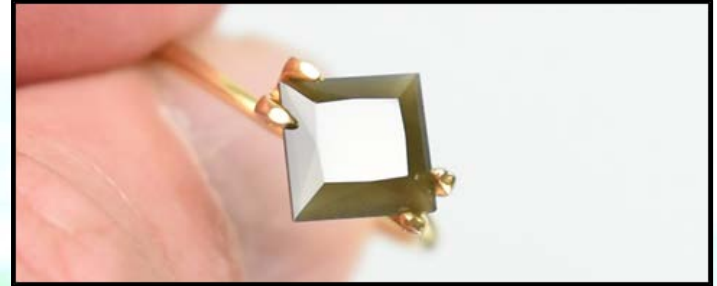
Left: Ring Stone 6x8 mm
round Cabochons, 13-17 mm
shield, 26.5 mm x 28.5 mm



Above: large oval, 27.8 mm x 21 mm
cushion ring stone, 22mm x 16 mm
tear drop, 40.5 mm x 24.3 mm



“Sky Jades©”, Safe and Trusted Responsible Supply Chain



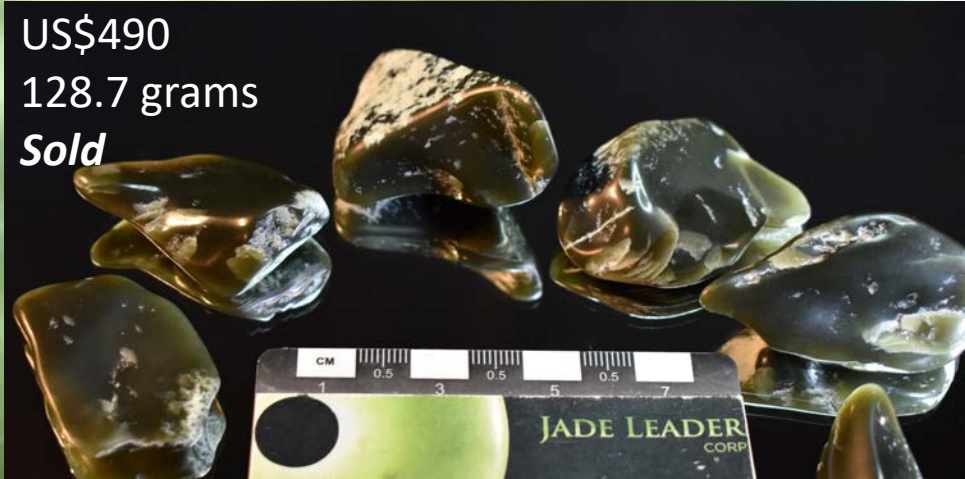
Series of test hoops, beads (6 and 8 mm) and faceted stone (7.2 mm), all of which are commonly considered as jewelry choices by western audiences.

Current market trends as outlined by industry groups such as GemGuide or AGTA (American Gem Trade Association) highlight that many market participants and consumers are increasingly showing strong interest in the provenance, source and extraction methodologies associated with their jewelry choices, preferring stones with clear and transparent source.

"Sky Jades"®, Specimens and Gem Nephrite Jade

Unique Specimen, and Gem materials.

US\$490
128.7 grams
Sold



US\$825
657.5 grams



US\$294
98 grams



Some Wyoming Jades, including our Sky Jades® are reportedly unique in the world for sometimes containing/displaying quartz crystals embedded within the Jade. This opens up an entirely new worldwide Mineral Collector's market, in addition to traditional gem/jewelry markets.

“Sky Jades[©]”, Consistency First

High uniformity of color and texture suitable for high luster, vitreous finish. The Sky Zone Jades are highly unusual in having very consistent colors, translucency and textures, making them particularly well suited for Designers who require consistency of product appearance in larger scale, branded product lines.

Nephrite Jades from around the world are typically much more varied in texture, color and grain, even at the scale of a single stone. This means that uniform product lines from other materials involves careful selection and matching of stones, often resulting in high handling, processing and sorting costs of rough material, as well as high rejection rates of unsuitable product.

US\$678
452 grams
Sold



US\$15,000
5,988 grams



Sky Zone-A Large, Wide Open Jade Bearing System



2021-230 Kg Jade recovered from 22 tonnes of excavated and processed quartz-epidote host rock. 183 Kg of the material was evaluated as marketable Gem or Specimen grade material or a recovered grade of 8.3 Kg/Tonne. The remainder of the Jade recovered, found at or very near surface, developed strong weathering, which was destructive to the stone's texture, consistency and color. This alteration was not found in the deeper part of the now reclaimed test area, at depths of 1+ meters from surface.



The surface area excavated for testing in 2021 covered 0.012 acres of the much larger identified Jade bearing alteration zone. Based on surface mapping and high resolution drone survey, the main alteration area covers some 2.35 acres, with as yet untested, smaller peripheral alteration zones occurring near the main Sky Zone. Maximum depth of 2021 testing was 1.5 meters, and the full depth extent of the Jade bearing system has not yet been defined. ***In summary, only less than 0.005% of the surface expression of our Sky Zone target has been tested to date, so far returning a recovered marketable Sky Jade® grade of 8.3 Kg/Tonne.***



2021-2022: an initial 85 Kg of the above recovered material has been “windowed”, or partially sanded and polished to show the stone's true color, texture and translucency to potential acquirers.

A sales site and virtual gallery was opened and populated with product at **Jadeleader.shop** in 2022. Over US\$25,478 of our Sky Jades® has been sold to date, at an average price of \$US 1.55 per gram, or US \$1,500 per Kg, in line with asking prices and the Company's expectations. Based on 9% of the 183 Kg of marketable materials sold to date, this results in a ***realized grade of US\$1,179/tonne at the Sky Zone****. (* Sales and prices figures updated January 2024)

Wyoming Projects/Ornamental-Carving Jade.

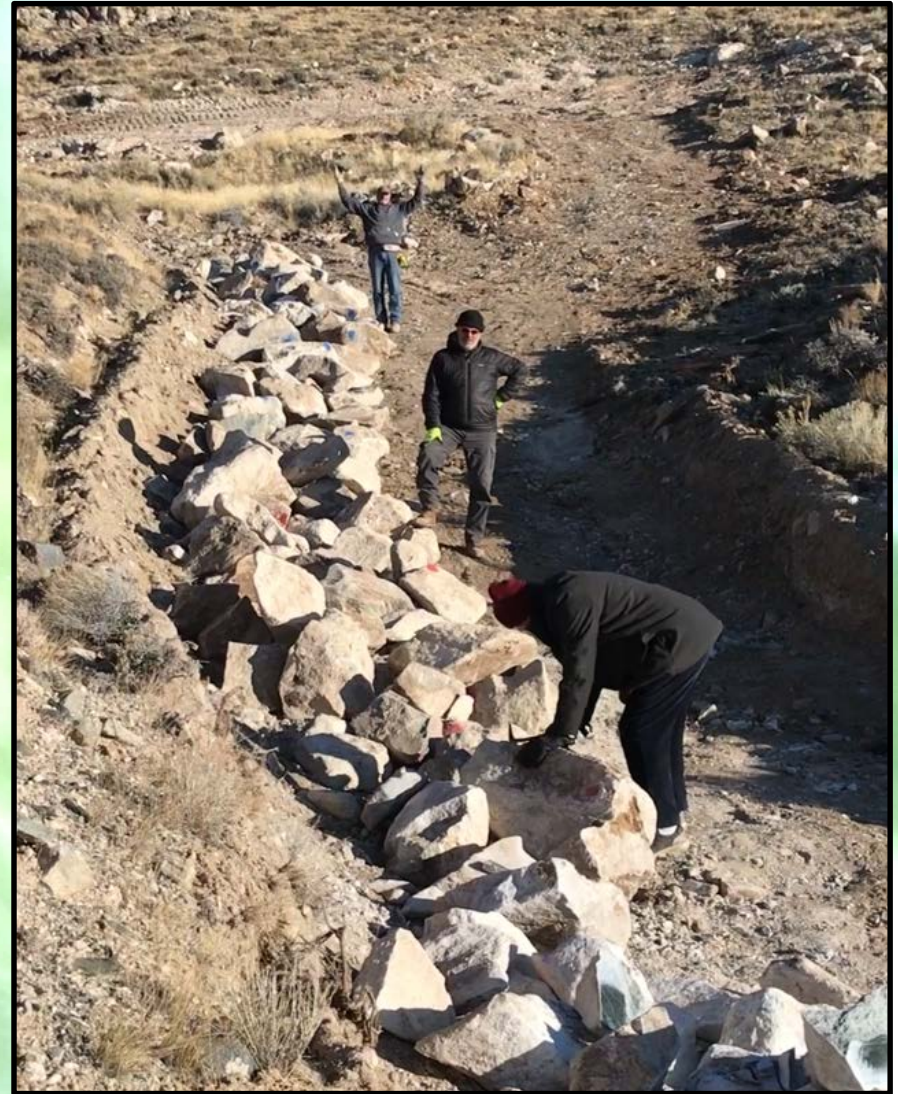
2019 exploratory mechanized trenching



Jade sample recovery trench T1A



S8-3,085 Lbs/1,400 Kg



**Jade samples from trench T1A
Total collected: 21.3 tonnes (<1 week)**

Wyoming Projects Ornamental Jades Testing

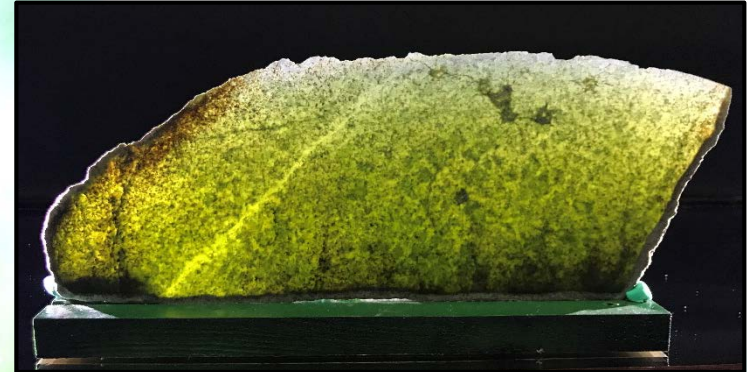
2020-2022



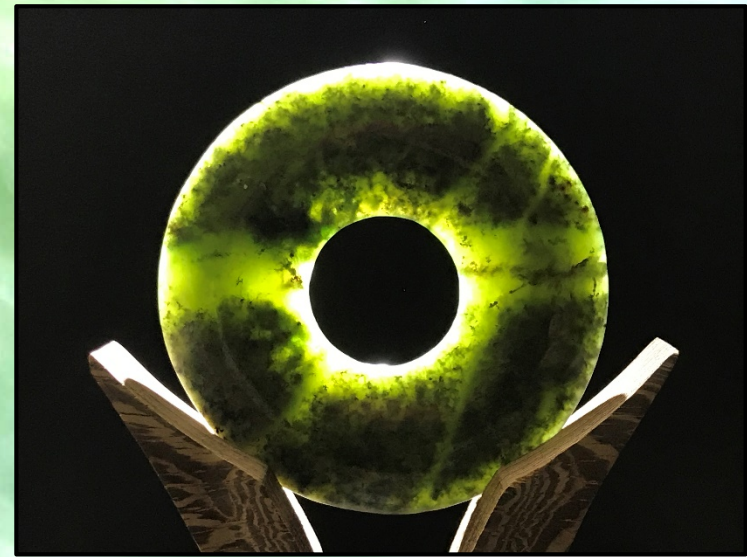
Tested as carving medium: abstract sculpture titled “Pashadi” (Serenity) by international award winning Canadian Sculptor Deborah Wilson. 23 Lbs, 13.5 inches high.

October 2019, just previous to the onset of COVID, over 22.7 tonnes of this ornamental/carving Jade material was recovered in two narrow trenches 180 meters apart across a mineralized system recognized at surface for over 400 meters.

A highly competent, often mottled Jade with colors varying between medium to dark green, the target market for this stone type are predominantly large carving facilities and the architectural stone market (tiles, ashlar, backlit ornamental feature pieces/backsplashes).

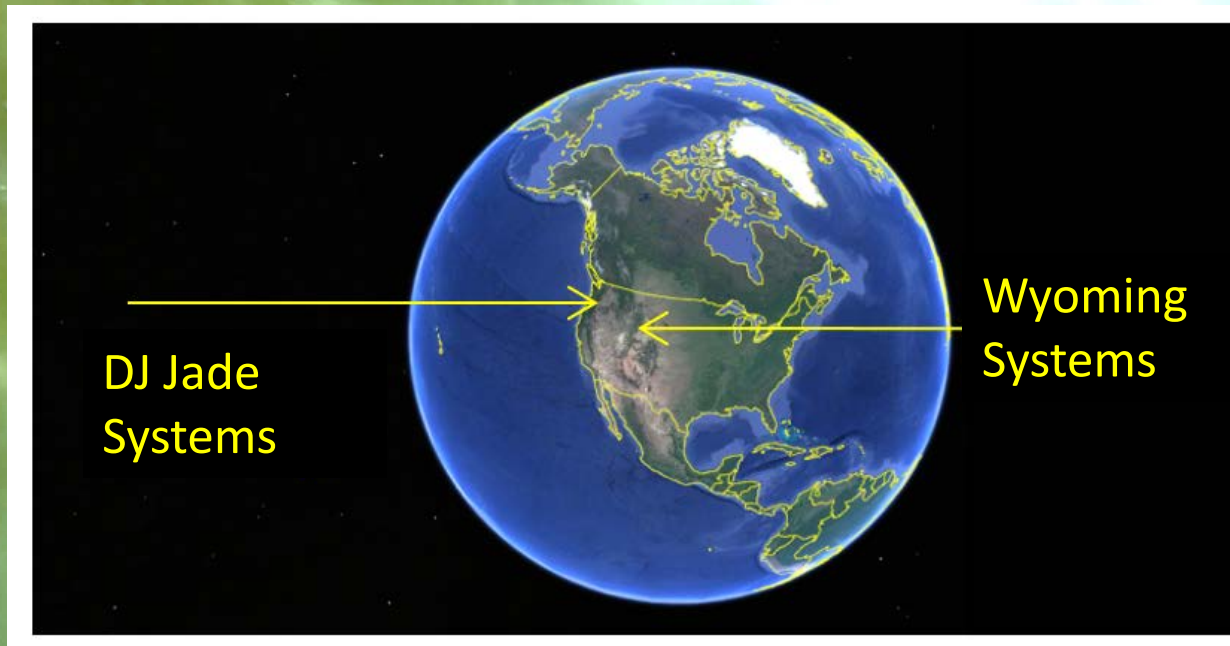


Backlit Plate, +/- 12 inches by 4.5 inches, ¼ inch thick

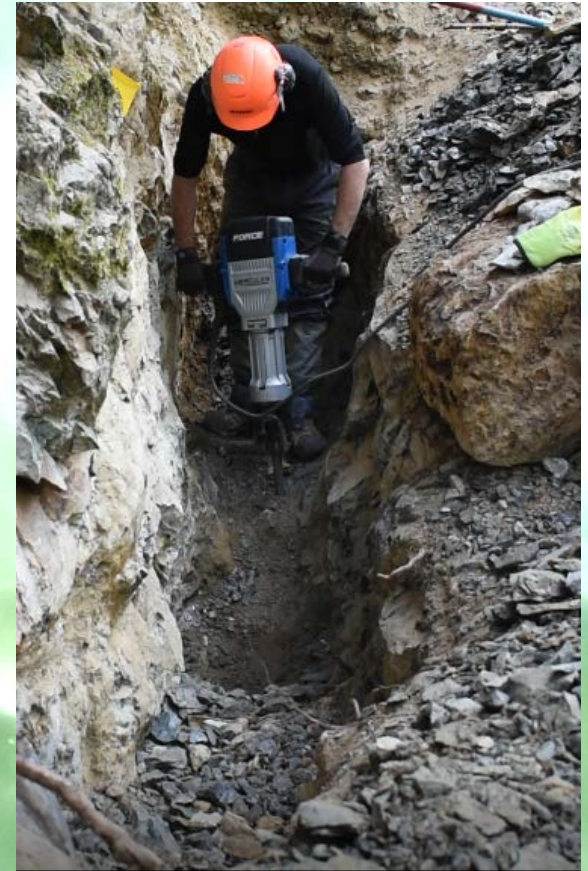


Backlit Disc, +/- 12 inches by 4.5 inches, ¼ inch thick

DJ Project/Asset



Washington State DJ Project, Nephrite Jade system



“Lode 2” Target- Length, Min 40 m, average width 1.6-1.8 m, depth confirmed to 30 m based on 2 trenches, 7 drill intercepts.

Pilot scale sampling: October 2022: 5 field days.

Production: +/- 250 Kg of White/Green Jade (First sale in December 2022, 5Kg for US\$1,004)
+/- 250 Kg Jade materials to be evaluated for “Phenomenal Jade”

Mixed “White/Green” Jade.

DJ Property, Washington State, Jade Leader Corp



2022-250 Kg of white/green Jade recovered in field 5 days from one of the surface trenches at the DJ Lode 2 target. To the left is one of the pieces currently available on our sales site at Jadeleader.shop. 20.6 Kilos, 34.5 cm x 15.5 x cm x 11.5 cm. (listed at USD\$3,605).



Our first sale of 2022 white/green Jade listed was a 5.2 Kilo block used by a family to have 4 matching bangles from the single stone, for mother, grandmother and daughters. The remainder of the stone remains with the family for new events to come.

Price realized: USD\$1004 (US\$200/Kg).

27.15 Kg of this material currently listed, 217 Kg remains to be processed, measured, photographed for listing.

Jade Associated Product



Rhodonite, DJ Project. Extracted and in storage, +/- 5000 lbs.

Comparable materials online ranging in ask/listed prices from \$10 to \$200/Lb.
Promotion of this material to the gem manufacturing sector began in April 2023, through a gem note scientific publication in the British Gemmological Association (Gem-A)'s Journal Of Gemmology.

*Ref: A New Occurrence of Rhodonite Associated with Nephrite Jade in Washington State, USA.
In: The Journal Of Gemmology, 38 (5), 2023, pp 423-424.*

Phenomenal Jades

- Released in 2022, a never seen before nephrite Jade type with a directional color shifting effect. Stones with such unusual optical effects such as color shifts are part of a gem class referred to as “phenomenal gems”.



Large disc of Phenomenal Jade, Washington state.

Stone is rotated with static light source to highlight the color shift effect.

Cut stone is 36.6 mm by 36.1 mm, 33 grams (165 carats).

Marquise cut cabochon of Phenomenal Jade, Washington state.

Stone is rotated with static light source to highlight the color shift effect.

Cut stone is 17.1mm by 7.4 mm, 0.7 grams (3.6 carats).



The Washington State Phenomenal Jades attracted the attention of the leading, international *Journal Of Gemmology* in October of 2022, leading to the publication of a peer reviewed article titled “Nephrite Jade from Washington State, USA, Including A New Variety Showing Optical Phenomena” in April Of 2023.

Way Forward, Our Vision

Increase current product visibility with targeted marketing, move from retail to bulk sales/production alliances.

Wyoming is a district scale (5 projects), field tested near term producer of Ornamental and Gem Jades with strong exploration upside.

Washington is an early stage target with strong exploration upside and immediate production potential of Ornamental to Gem to Phenomenal Jades and associated Rhodonite.

With sales traction, increase production and expand on current exploration on all projects.

Build Productive Assets, Make Exploration Pay.

Jade Leader Corp-Board of Directors, Management, Advisory

- Jean-Pierre Jutras, B.Sc. Hons Geology, P.Geol, President and Director

Mr. Jutras, a professional mineral exploration geologist, has over 35 years of experience in the exploration industry and has worked in over 15 countries on four continents, with numerous public companies including Placer Dome, Prism Resources, Golden Star Resources and Manson Creek Resources Ltd.

He was the President and a Director of Tyler Resources (TYS) from 2001 until March 2008. During that period, Tyler increased in market cap from <\$1 million to \$214 million when the company was purchased by Jinchuan Group Ltd. of China. Mr Jutras was responsible for overseeing all company operations, including all exploration programs on the company's copper-gold project in Mexico, as well as negotiating the sale of the company.

In addition, Mr. Jutras has been a Jade and gemstone carver for some 35 years, a past member of GANA (Gemstone Artists Of North America), and an internationally recognized Jade and Gemstone carver, receiving a silver medal at the Suzhou, Zi Gang Bei competition, China, In November 2016, and a bronze award at the same competition in 2019.

- Dr. Peter K. M. Megaw, Director and Technical Advisor

Dr. Peter K.M. Megaw, is a Consulting Geologist (PhD University of Arizona, 1990) President of IMDEX/Cascabel and co-founder of Minera Cascabel and MAG Silver. He is well known as a metals exploration geologist and received the PDAC's 2017 Thayer Lindsley Award for discovery of the silver-rich Juanicipio Vein system in Fresnillo, Mexico. Peter is also a passionate mineral collector with strong relationships throughout the international mineral and gem community stemming from over 35 years as Exhibits Chair for the world-famous Tucson Gem and Mineral Show™. This job has given him the opportunity to visit most of the world's major mineral museums, mineral shows and private collections. His personal collection focusses almost exclusively on Minerals of Mexico and he has published extensively on specimen localities there. He is photo-moderator for submissions on Mexico to Mindat.org and co-moderator of the FMF Mineral Forum. A combination of the above led him to be awarded the prestigious Carnegie Mineralogical Award for 2009. From 2013 to 2015 he was an invited guest at the first three Hunan, China Mineral Shows where he developed an appreciation for the importance of Jade in the International gem markets and an interest in the geological aspects of Jade formation and exploration. Dr. Megaw was a director and Chief Exploration Officer for MAG Silver Corp, a Director of Minaurum Gold Inc. and a Technical Advisor to Barksdale Capital Corp amongst others. Dr. Megaw was elected a director of Jade Leader Corp. on March 14, 2018.

Jade Leader Corp-Board of Directors, Management, Advisory

- **Dr. Shane Ebert, P.Geo., Director**

Dr. Shane Ebert has over 35 years of gold, copper, and base metal exploration experience in North America, South America, Australia, and Europe. Dr. Ebert was involved in the discovery of a large copper deposit in Mexico (Bahuerachi Deposit), a gold deposit in eastern Canada (Viking), and a Cu-Au porphyry on the Ootsa Property (West Seel). He has extensive experience managing junior exploration companies and is a registered professional geoscientist with the Association of Professional Engineers and Geoscientists of British Columbia. Currently the President, VP Exploration, and a Director Surge Copper Corp., President and a Director of CANEX Metals Inc., and is a Director of Jade Leader Corp.

- **Cornell McDowell, P.Geo., Director**

Cornell McDowell is a professional geologist registered in both Alberta and British Columbia and serves as Vice President of Exploration for Aben Resources Ltd. and is the Qualified Person for that Company. He has been self-employed as a geological consultant since graduating with a Bachelor of Science (Specialization in Geology) from the University of Alberta in 2005. He has worked with both privately held and publicly listed mineral exploration corporations in multiple jurisdictions. Most recently with Gold Reach Resources (now Surge Copper) on the Ootsa Project, where in excess of 100,000 meters of drilling has advanced the project from initial stage through resource development to the delivery of a positive PEA. He also serves on the Board of Directors and Audit Committee for Jade Leader Corp.

- **Theresa Kosek, CPA, CA, B.Comm. CFO**

Ms. Kosek is a Chartered Professional Accountant and Chartered Accountant with twenty five years' experience working in senior level financial reporting roles in public, private and not for profit organizations. After completing her CA with Grant Thornton she spent 17 years in oil and gas, gaining expertise in US and Canadian public company reporting, risk management, tax reporting and corporate governance. Leaving the industry in 2013, she spent the next ten years in various CFO roles, assisting small private companies with top line growth, improvements to systems of internal control and financial reporting, acquiring and divesting of assets and enhancing the overall value of the enterprise. Most recently she spent four years in Victoria, BC as the CFO of the Oak Bay Marine Group, a private Canadian company with operations on Vancouver Island, Canada, Newport Oregon and Long Island, Bahamas. There she further developed her skills in strategic planning, contract negotiation and cross boarder currency and financial transactions. Now, semi-retired, Ms. Kosek offers her expertise as an independent consultant to small companies requiring part time CFO services.

Jade Leader Corp-Board of Directors, Management, Advisory

- **Barbara O'Neill, Corporate Secretary**

Ms. O'Neill has been Corporate Secretary for a number of TSX and TSX Venture Corporations primarily in the mining industry, both nationally and internationally, for over 30 years. She has extensive experience in public offerings, public listings and Exchange matters, share and asset acquisitions and dispositions, restructurings, securities regulatory requirements for public issuers and other related business transactions. She is currently Corporate Secretary of Jade Leader Corp. and Canex Metals Inc., CanadaBis Capital Inc. and previously Corporate Secretary of Tyler Resources Inc. and numerous other public companies

- **Dr. Robert Lavinsky, Advisor**

Dr. Lavinsky has an undergraduate degree in biochemistry from Rice University and earned his doctoral degree from the University of California-San Diego in Biochemistry and Molecular Genetics in 2000. However, his passion for mineral specimens led him to focus on building his company, The Arkenstone, into one of the world's premier sources for world-class, museum to collector-quality mineral specimens. Since 1984, he has purchased many significant private mineral collections, and has donated important mineral specimens to the [Smithsonian Institution](#), [Harvard University](#), the [California Institute of Technology](#), the [University of Arizona](#), as well as other significant institutions. To honor his contributions to mineral research and museum curation, a recently discovered new mineral species was named Lavinskyite.

Amongst some of Dr. Lavinsky's additional projects was to be a sponsor of *The World's Most Precious Treasures*, a reality television show following gem tanzanite from the mine to the market in Tucson; which was made by French National Television in association with the gem company Cartier of Paris.

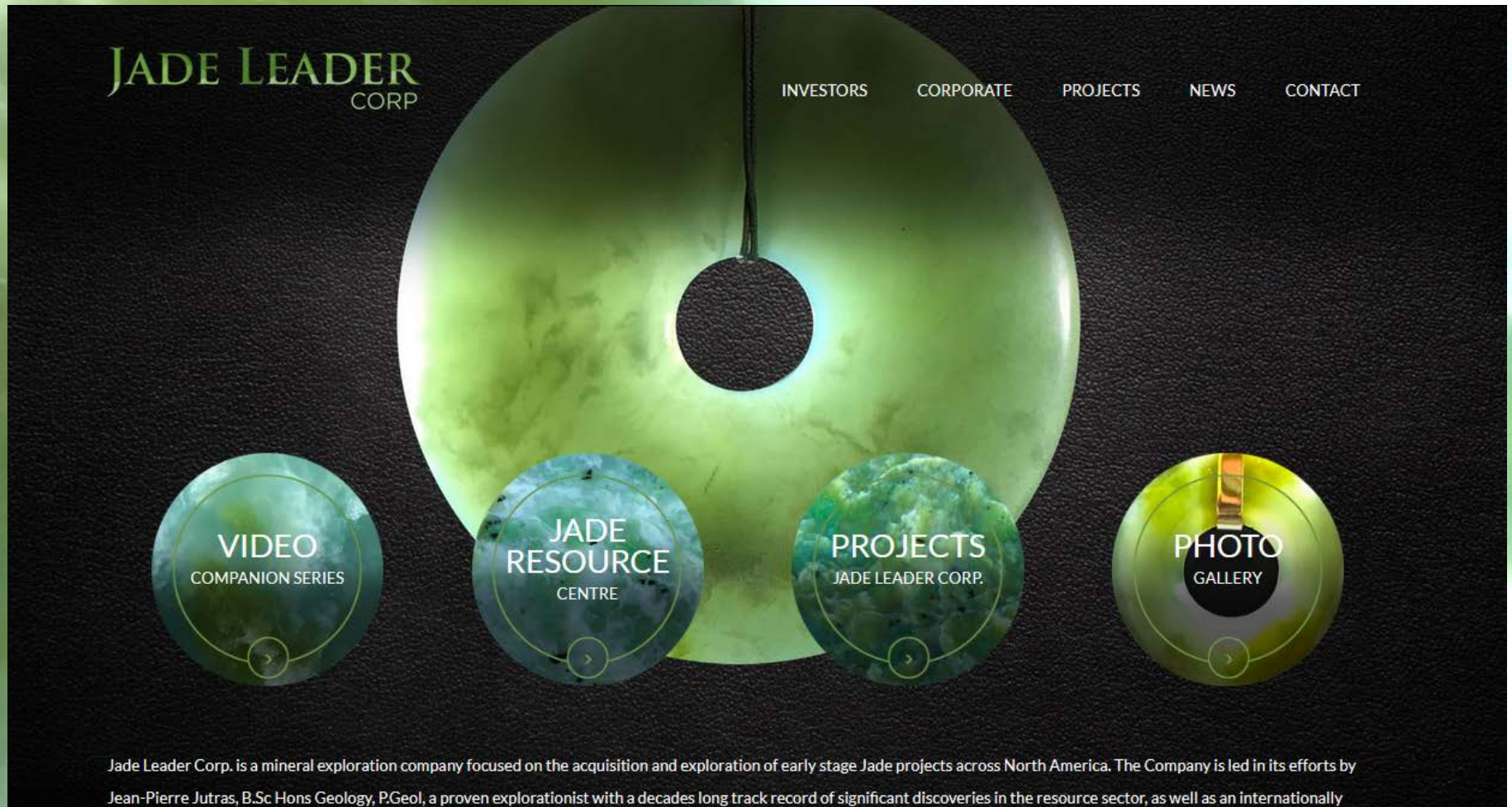
- **Andrew Shaw, Advisor**

Andrew Shaw is a British former BBC reporter who gave it all up to travel to China to study the craft of Jade carving. He has become a gold medal winning master carver and now lives with his wife in the city of Suzhou where they run a tea house and Jade gallery. Andrew has a unique style which mixes traditional Chinese ideas with modern Western designs. He is the only foreigner living and working as a Jade carver in the middle kingdom and has gained a certain amount of fame as a result. Documentaries and TV programs are often made about him. He has collected a wealth of information about the modern Jade industry unmatched in the Western world. There are a lot of people who know about ancient Jades collecting dust in museums but no-one in the West knows more about the huge modern Jade industry in China than he does. (Introduction to the Book "Jade Life", a recently published international bestseller by Andrew Shaw on the current state of Jade culture and industry in China).

Mr. Shaw is very active in the international Jade community, and maintains an educational and sales website at www.jadefiend.com.

Additional Resources- Jade Leader Corp

Jadeleader.ca/Jadeleader.com

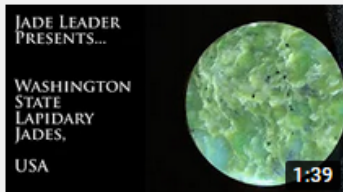


Additional Resources- Jade Leader Youtube Channel.



Jade Leader Reveals Color Change Phenomenon Jades...

181 views • 4 days ago



Washington Lapidary Jades - Jade Leader Corp.

97 views • 3 weeks ago



Jade - Trusted Stone Trusted Sources

454 views • 4 weeks ago



How to cut a cabochon in Sky Jades®

362 views • 5 months ago



Jade Leader Shop

475 views • 7 months ago



Wyoming Top Black Jade

8.8K views • 1 year ago



Wyoming Jade Ventifact

746 views • 1 year ago



Wyoming Jade - Ornamental

974 views • 1 year ago



Sky Jades, A New American Jade Discovery

1.2K views • 1 year ago



Jade Leader - Revealing Sky Jades® of Wyoming

1.5K views • 1 year ago



The Quest for Sky Jades, Wyoming January 2021



Jade Leader - Jades of Zi Gang Bey 2019



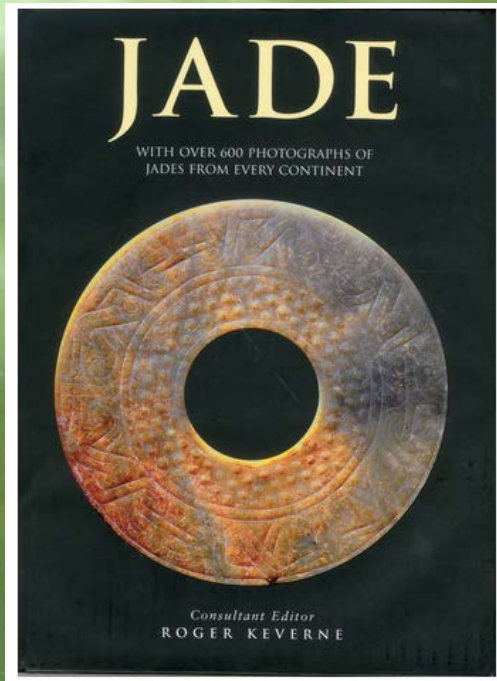
Jade Leader - Exploration Update and Jades of...



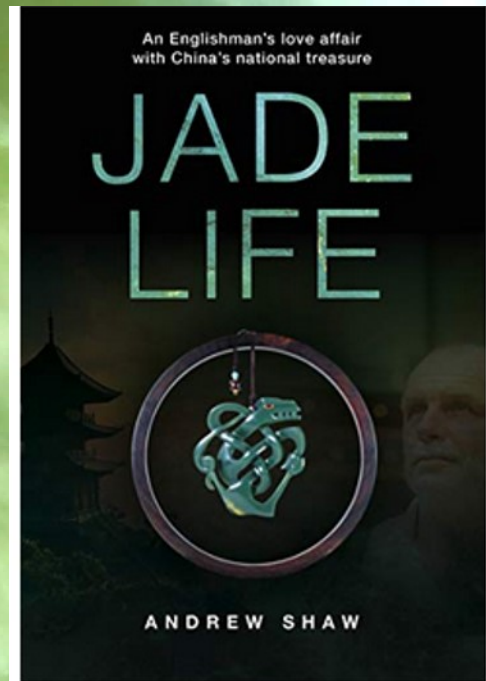
Jade Leader - Jades of DJ Project

Also: Instagram @jadeleadercorp
Shop site: Jadeleader.shop

Additional Resources-Book Favorites



Great historical overview



Great update on changes since 2000



Published in 2022, the newest and most comprehensive available book on jade in the west to date (lotusgemology.com)

Technical paper/Jade overview: Understanding Jade in a World context, Gina Lee Barnes (in: Journal of the British Academy, march 5, 2018)

Jade Leader Corp.

TSXV:JADE

Thank You!

