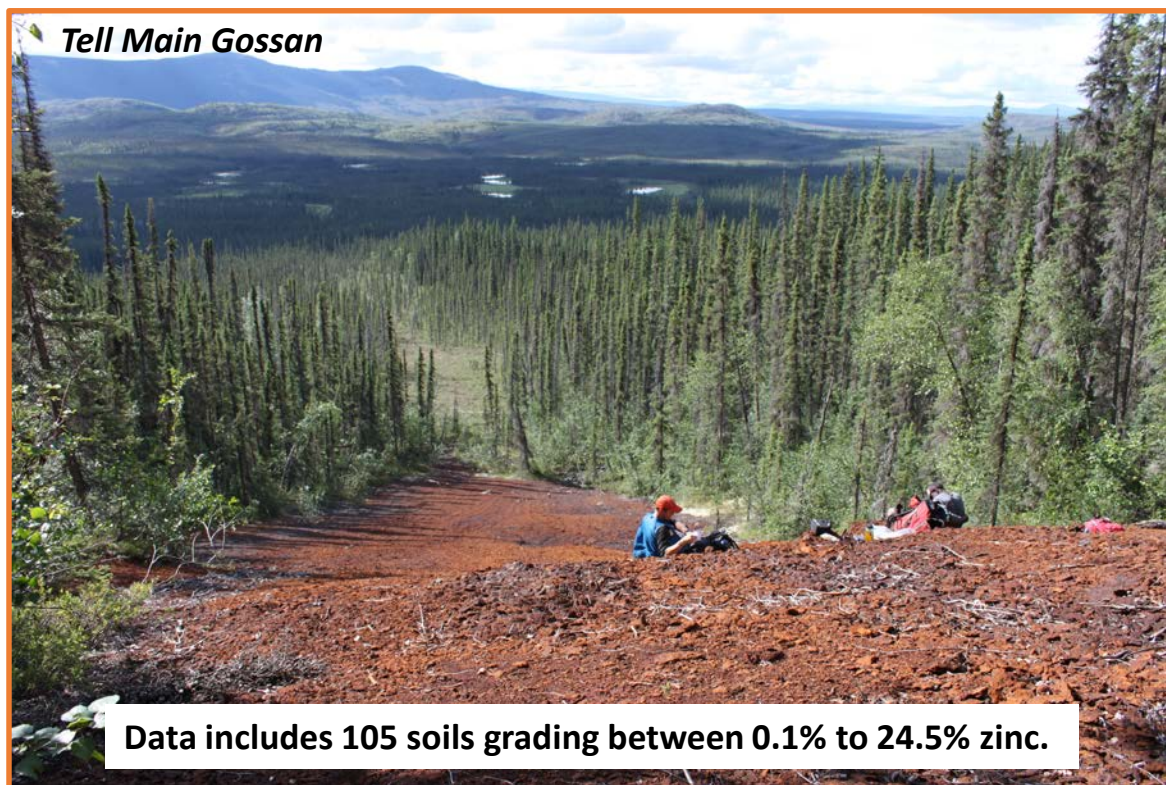


Gossans as Discovery Indicators for Critical Metals (Zn-Ag, Ni, Co, Mn)

Information pamphlet For Tell Property, Mayo Mining District, Yukon Territories.



Gossans- Long history of massive sulphide discoveries:

Broken Hill , Australia, SEDEX

Red Dog, Alaska, SEDEX

Howard's Pass, Yukon, SEDEX

Wolverine, Yukon, VMS

Fyre Lake, Yukon, VMS

Marg, Yukon, VMS

Ocelot, Yukon, (CRD?)

North Rackla, Yukon, (SEDEX?)

397 Ha, 19 claim block, in a historical Ag-Pb-Zn District re-energized by recent CANTEX Mine Development Corp. (TSX:CD) at North Rackla and numerous regional Gold discoveries including at Rogue by Snowline Gold Corp. and Rhosgobel and RC gold by Sitka Gold Corp.

Prepared for Jade Leader Corp (TSXV:JADE) by JP Jutras, P.Geol, President. Email jp@gold.ca.

Gossans as Discovery Indicators for Critical Metals (Zn-Ag, Ni, Co, Mn)

Information pamphlet For Tell Property, Yukon Territories.



Ash Gossan (Zn, Ni, Ag)

Tell Main Gossan (Zn, Ag, Ni, Co)



Corona/Majestic Gossan (Zn, Ni, Ag)



Crystal Gossan (Zn, Ni, Ag)

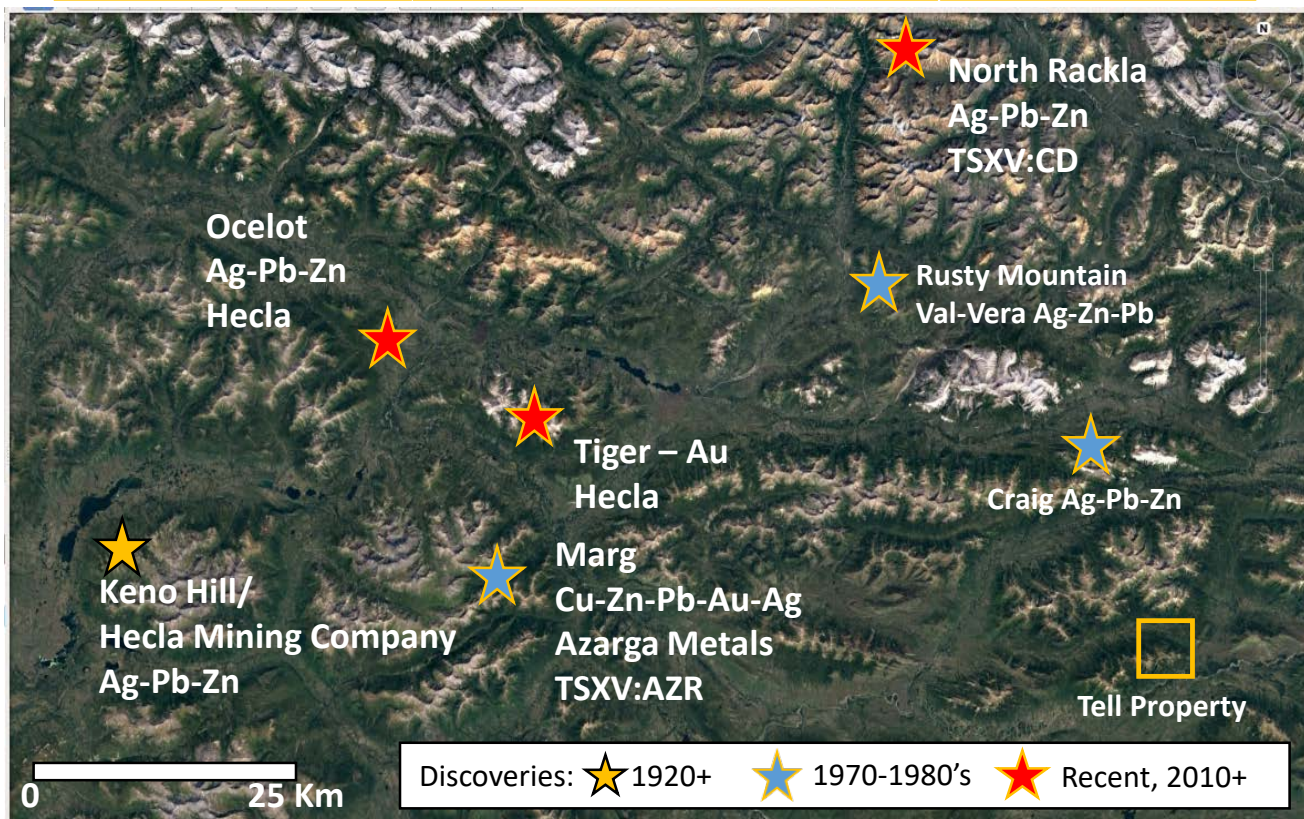
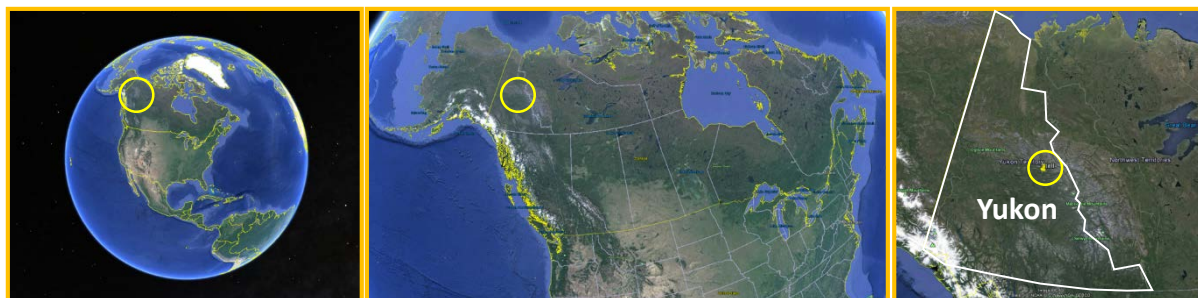


Area 13 point source gossan, +/- 3 km from Tell Main Zone (Zn, Ag, Ni, Co)

Property Location

Long history of discoveries, 1920 to present

Mayo Mining District, Yukon Territories.



Keno Hill, 1920-Now, 200 Moz Ag historical production, +/-32 Moz Ag current reserves.

Rusty Mountain/Craig, discoveries 1970's, high grade Ag-Pb-Zn occurrences.

Marg, discovered 1988, 6.092 Mt @ 1.76% Cu, 4.6% Zn, 2.46% Pb, 1 g/t Au, 62.7 g/t Au. VMS type. Discovery followed large creek gossan anomaly. Azarga Metals Corp.

Tiger, ATAC Resources (Now Hecla), discovered 2008, M+I Au resources 4.5 Mt @ 3.19 g/t Au (464,000 Oz Au).

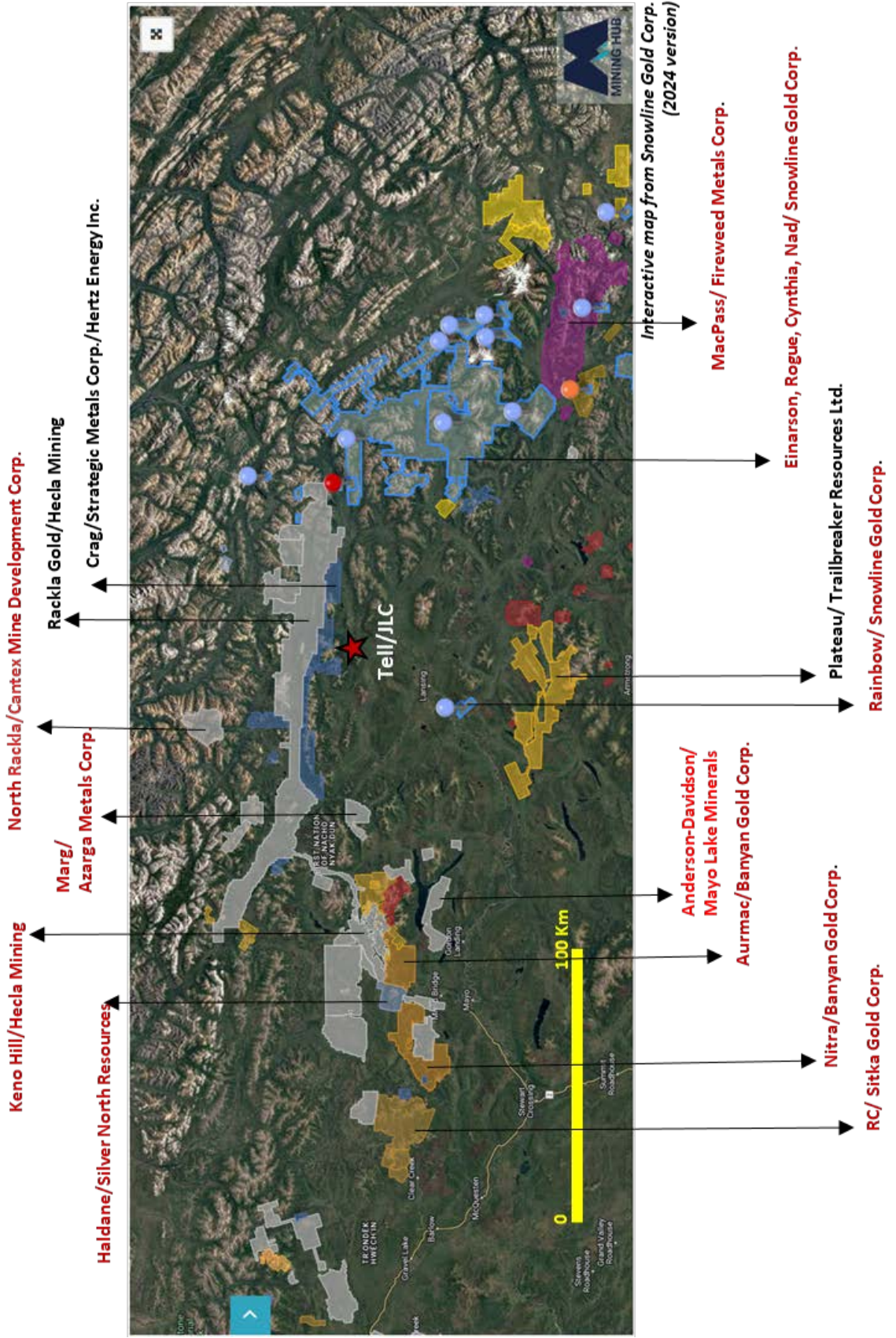
Ocelot, ATAC Resources (Now Hecla), discovered 2011, Ag-Pb-Zn, including DDH OC-11-09 41.72 meters @ 145.43 g/t Ag, 3.36% Pb, 11.65% Zn. Open for expansion.

North Rackla, Cantex Mine Development, discovered 2018, including YKDD 19-040 16.32 meters @ 153.57 g/t Ag, 3.10% Pb, 2.44% Zn and YKDD 19-146 12.61 meters @95.62 g/t Ag, 13.21% Pb and 20.61% Zn. Active project, open for expansion.

Mayo Mining District Recent Activity

A re-energized, active district after years of dormancy.

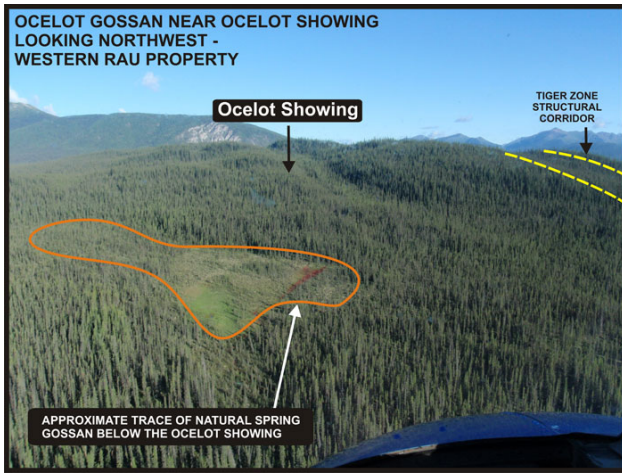
Yukon Activity 2025, Mayo Mining District- Tell regional
(By Project Name and Company, Red=active in 2025)



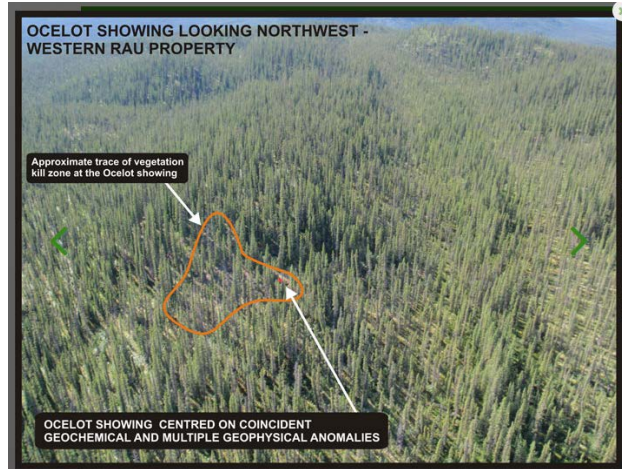
Gossans as Discovery Indicators

Recent local case study

Ocelot-TSXV. ATC, Atac resources 2009-2011 (taken over by Hecla Mining, July 2023)

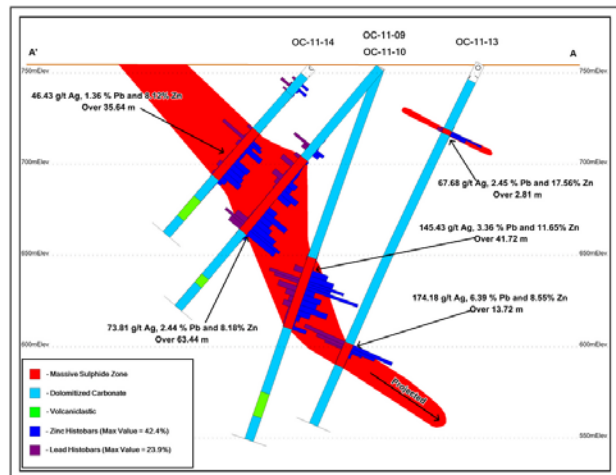


The Atac Ocelot Ag-Pb-Zn (Now Hecla) discovery was made as part of regional exploration target evaluations within their large Rau land Package in the Mayo mining district, following up an active gossanous stream.



Outcropping mineralization was identified offset from the active gossans within a weak, small vegetation kill zone.

This target was tested with 24 drill holes totalling 4,918 meters. The zone remains open for expansion, however, ATAC focussed mostly on developing its gold targets within the area since that time.



Drill results included the following intercepts:

DDH 11-09 : 41.72 m @ 145.43 g/t Ag, 3.36% Pb, 11.65% Zn

DDH 11-11 : 37.91 m @ 188.07 g/t Ag, 8.69% Pb, 6.06% Zn

DDH 11-13 : 13.72 m @ 174.18 g/t Ag, 6.39% Pb, 8.55% Zn

Source of all historical information/images: www.atacresources.com

Gossans as Discovery Indicators

Recent local case study

North Rackla-TSXV:CD, Cantex Mine Development Corp., 2018-ongoing.

“The Massive Sulphide Zone has so far been traced for almost 2.3 kilometres and hosts high silver, lead and zinc values.” CD website, cantex.ca. Germanium also recently found through the mineralized body.

Since 2018, over 81,000 cumulative meters drilled, massive sulphide intercepts from surface to vertical depths of 700m below surface. 2.3 Km of tested strike length of the system to date. High zinc/manganese correlation, similar to Sullivan and Broken hill Sedex systems.



Discoveries at the North Rackla project have reportedly been made on the basis of drilling oxidized gossanous zones, such as the one shown to the left (Chad Ulansky, President, Cantex Mine development corp. at the South zone gossan).

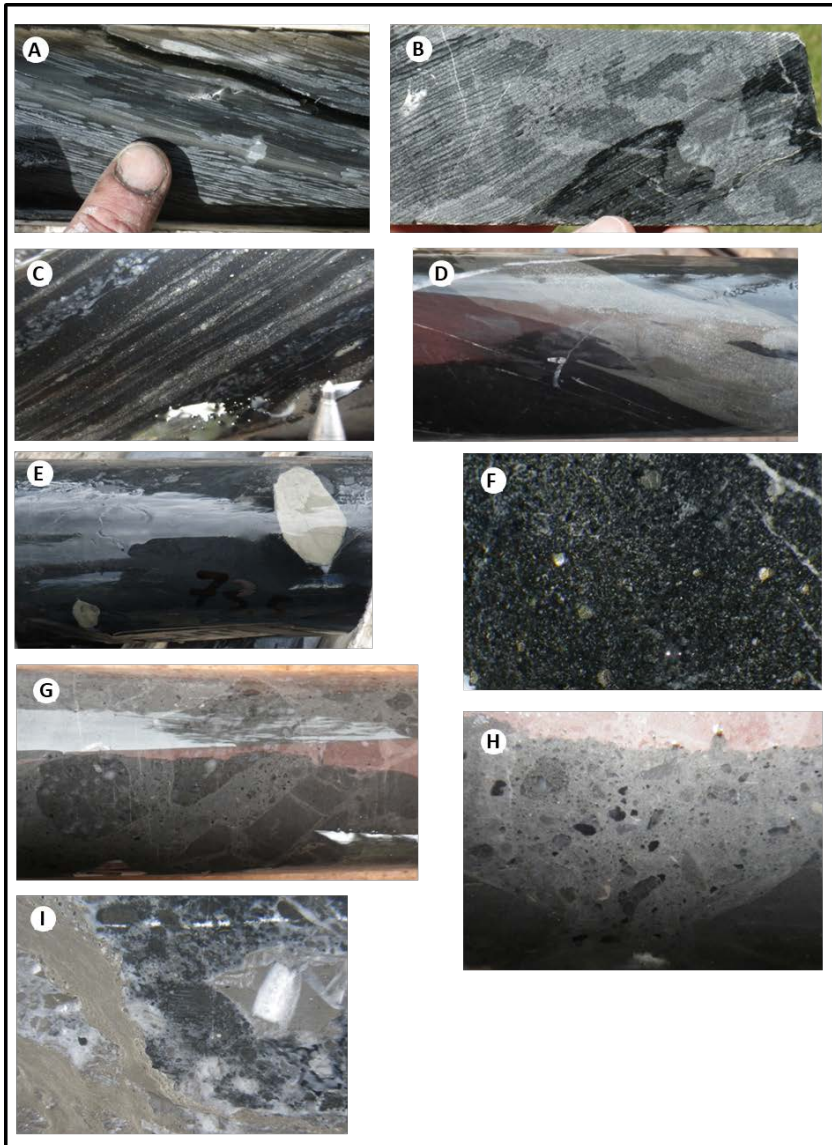
Below are listed select early mineralized intervals from the CD 2018-2019 drilling programs. Drilling has continued through 2025.

DDH	From	To	True width (m)	Zn %	Pb %	Ag g/t	Mn %
18-012	100.87	113.87	9.19	18.04	8.09	150.6	3.67
18-014	183.40	205.40	9.30	10.97	7.33	122.6	2.00
19-046	104.5	136.5	11.2	16.47	8.47	134.41	2.59
19-119	9.20	42.20	27.99	4.48	2.48	14.95	4.76
19-146	222.6	240.75	12.61	20.61	13.21	95.62	2.23
19-156	270.65	287.50	12.72	7.47	3.20	44.70	4.10

Source of all information/images: www.cantex.ca

Tell: Proper Geological Context for Massive Sulphides

Initial 2014 short drilling program outlined syngenetic sulphide bearing exhalative style mineralization in a previously undocumented transition between volcanic and sedimentary units.



A) Bedded barite with minor shale and So Pyrite band (ddh 4, 59.5 m). B) Massive bedded barite (ddh 3, 23.7 m). C) Rhythmically laminated black shales with syngenetic pyrite and minor barite bands/beds (ddh 2, 30.6 m). D) Coarse syngenetic pyrite band in black shales (ddh 3, 119 meters). E) Coarse sulphide clasts in fine grained mudstone/shale (ddh 4, 73.5 m). F) Fine crystal lapilli tuffs within shale unit (ddh 2, 118.8 m). G) Medium to coarse syn-brecciated quartz-mica-feldspar unit (ddh 4, 120.5 m). H) Close up of textures in potential hyaloclastic felsic quartz-sericite unit, showing abundant angular clasts and glass shards (ddh 4, 120.7 m). I) Silica flooding and sulphide bands cross-cutting all units, without evidence of tectonic emplacement, indicating syngenetic/synsedimentary hydrothermal activity.

DDH	From (m)	To (m)	Interval (m)	Zn %	Ag g/t
2014-02	56	68	12	0.22	5.95
2014-02	130	160	30	0.24	1.97
2014-03	92	160	68	0.24	3.54
2014-04	140	148	8	0.13	2.6

Select anomalous intervals for limited Tell drilling to date (2014).

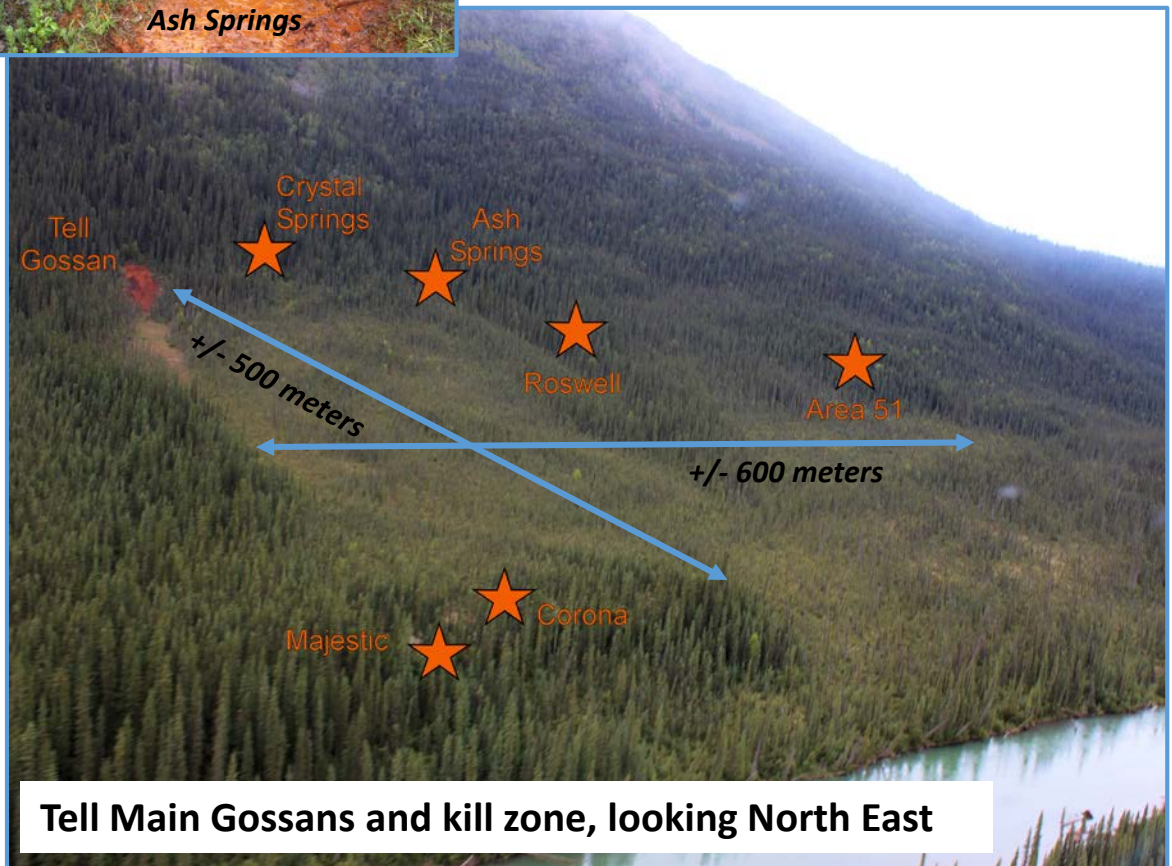
Highly anomalous Zn-Ag may indicate distal part of sedex/VMS type system.

Tell

Available technical data.



Large anomalous soil signature within a 600x500 meter vegetation kill zone. 7 significant surface gossans with no identified massive sulphide source to date, in a multi-km package of sulphide bearing sedimentary rocks with strong exhalative components. Approximately CDN\$426K spent between 2001 and 2019.

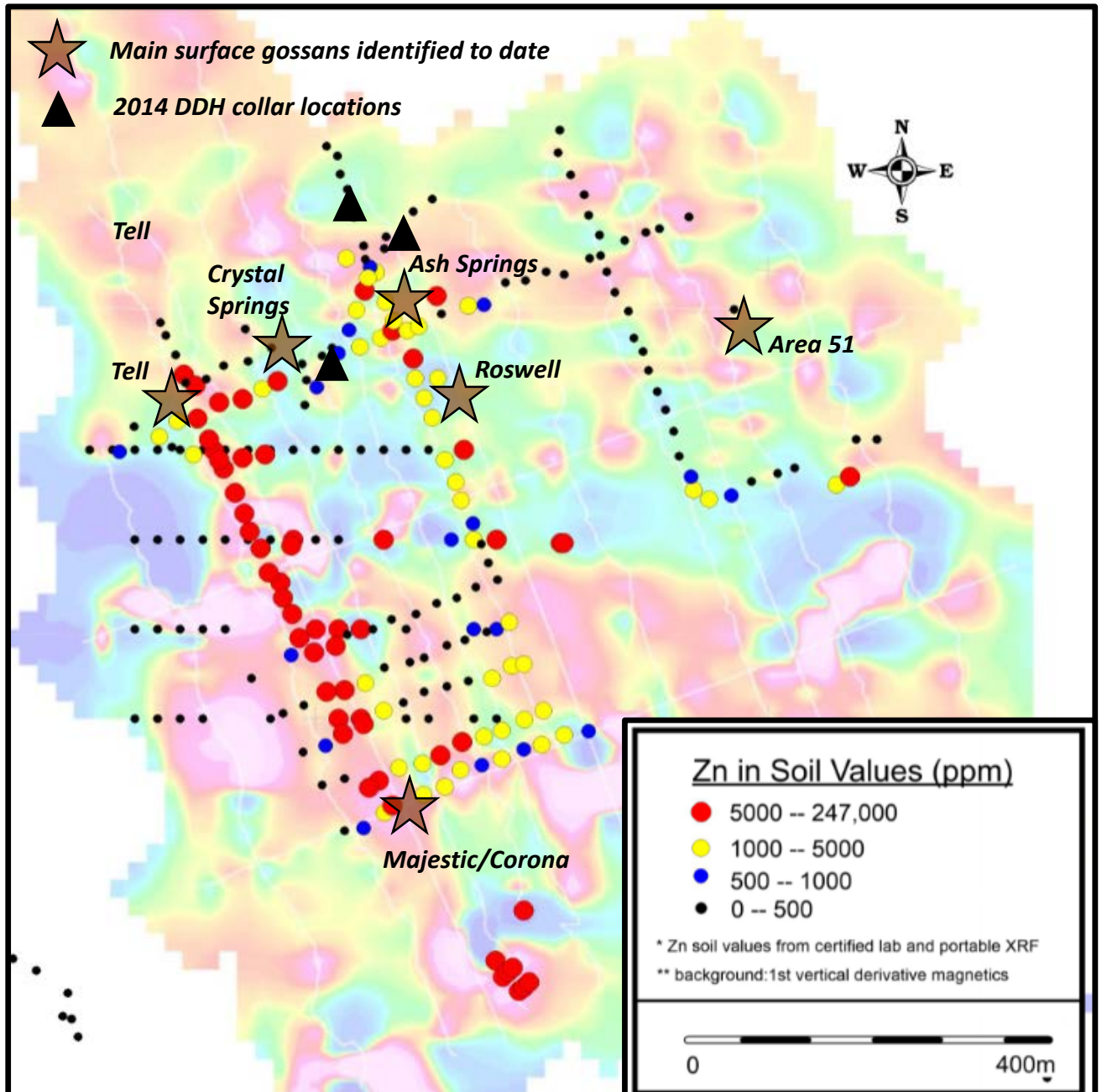


Soils, stream and rock samples with multi element ICP and/or XRF data: Soils/silts (393 including 212 soils between 0.0 to 0.1% Zn, 65 soils 0.1% to 0.99% Zn and 40 soils between 1% to 24.64% Zn), Rocks (35), 6 water analyses. Zinc soil map for main zone attached on next page.

Geophysics: Main Zone ground induced polarization and magnetic survey.

Diamond drilling: 654.3 meters in 4 drill holes (2014), Logs, assays and photos. Half core on site. 302 assayed core samples in 2m intervals.

Tell Main Zone highlights.



Tell Main Gossans, Soils (Zn-ppm), Drill collar locations overlain on Ground Magnetics 1st vertical derivative over Main Zone.

Tell

Unresolved anomalies outline strong potential for polymetallic critical metals mineralization.

Highly anomalous Zn, Ni, Co in 2014 Soil grid are poorly if not represented at all in drill core assays, indicating that the source of these metals were not intersected during the limited round 1 scout drilling program.

Zn - 2014 soils, 55 values between 1000 and 10 000 ppm, 21 values ranging from 10,001 ppm (1%) to 246,400 ppm (24.6%). Drill core only returned 83 assays between 1000 ppm to 7000 ppm (0.7%) zinc.

Ni - 2014 soils returned 16 values ranging between 1083 ppm to 6142 ppm (0.61% Ni). Highest anomalous Ni value in core was 189 ppm.

Co - 2014 soils returned 17 values between 145 ppm to 1433 ppm (0.14% Co). Highest anomalous Co value in core was 16.9 ppm.

Additional 2019 soils south of 2014 drilling area included 4 samples (of 12) with highly anomalous Zn (0.47% to 3.21%) and Ni (271 ppm to 3110 ppm (0.31%)). Source unknown.

Water geochemistry from numerous gossanous springs noted as similar in composition to the Prairie Creek Mine water, an important ZN-Pb-Ag massive sulphide deposit in the NWT of Canada (ref: Dr. D. Rainey, P. Geo, 2011). As of last reports by Norzinc Ltd. (2021), the Prairie Creek Deposit contains 9.8 Mt combined M&I resources @ 22.7 Zn eq, and 6.4 Mt Inferred at 24.1% Zn eq.

Area 13 (+/- 3 km) along strike to the NW of the Tell Main Zone.

Anomalous stream sediments samples including 0.40 %, 0.52 %, 1.42%, 1.43% and 3.0 % Zn, 4 samples above 1000 ppm Ni and high manganese. Rock grab samples returning 0.29% Zn and 470 ppm nickel as well as 3.83% Zn, 0.60% Ni and 0.28% Co.

NOTE: This property and surrounding area has never been flown with any airborne geophysical surveys, a key technology in the detection of potential massive sulphide targets.

Tell

Project technical documentation/bibliography.

Bibliography/Data on hand for Tell Property, 2004 to 2014, exclusive of historical or public domain data.

Technical/Assessment Report, 2004 Sampling Program, Frog claims, Mayo Mining District, Yukon Territories, Jean-Pierre Jutras, B.Sc Hons Geology, P.Geol, for Manson Creek Resources Ltd, January 31, 2005

Assessment Report for Work Completed August, 2005, Frog claims, Frog 1-70, Regan Chernish for Manson Creek Resources Ltd.

Assessment Report on the 2011 Geological and Geochemical Sampling Survey on the Frog Claims, Nadaleen River and NW of Stewart River, Yukon, Dustin Rainey, Ph. D., Geol I.T, Regan Chernish, P.Geol, for Manson Creek Resources Ltd.

Assessment Report on the 2012 Induced Polarization Geophysical Survey on the Frog Claims, Nadaleen River and NW of Stewart River, Yukon, for work performed June 12 2011 to June 21, 2012, Regan Chernish, P.Geol, for Manson Creek Resources Ltd.

National Instrument 43-101 Technical Report. Geological and Geophysical Reconnaissance of the Tell Property (Frog Claims) in the Mayo Mining District, Yukon. Dustin Rainey, Ph. D., Geol, 2014, for Manson Creek Resources Ltd.

Assessment Report, 2014 Core Drilling Program, Guaman/Tell Property, Mayo Mining District, For work performed during the period of July and August, 2014, Jean-Pierre Jutras, B.Sc Hons Geology, P.Geol, for Manson Creek Resources Ltd.

Exploration Proposal, 2015, Tell Project, Mayo Mining District, in support for a YMEP application for Funding, Focused Regional Program Module for the 2015 exploration season, Jean-Pierre Jutras, B.Sc Hons Geology, P.Geol, for Manson Creek Resources Ltd.

Technical Report, 2015 Exploration Program, Tell Property, Mayo Mining District, for work performed during the period of August 2015 under YMEP Grant 15-097, Target Evaluation, Hard Rock, Jean-Pierre Jutras, B.Sc Hons Geology, P.Geol, for Manson Creek Resources Ltd.

Assessment Report, 2019 Exploration Program, Geological/Geochemical, Tell Property, Mayo Mining District, for work performed during the period of July 16-24, 2019, Jean-Pierre Jutras, B.Sc Hons Geology, P.Geol, for Jade Leader Corp. (formerly: Manson Creek Resources Ltd.)

**For more information, please contact, J.P Jutras, P.Geol.
President, Jade Leader Corp TSXV:JADE at jp@gold.ca**