

# **Black Lake Uranium (+/-Molybdenum) Leases, Saskatchewan**

## **Information pamphlet For Black Lake Mineral Leases, Saskatchewan.**



Charlebois Lake Drilling,  
mineral lease S-108963,  
741 hectares  
2007



**2 Mineral Leases totalling 1,290 Hectares, valid until 2023.**

**Mineral lease S-108963 (Charlebois Lake Zone), 741 hectares**

**Mineral lease S-108967 (Paisley lake, A zone), 549 hectares**

**Mineral Exploration Expenditures to 2008 totalled \$921,747.00**

**Leases 100% owned by Jade Leader Corp., 1.5% underlying 3<sup>rd</sup> party NSR Royalty.**

# **Black Lake Uranium (+/-Molybdenum) Leases, Saskatchewan**

## **Information pamphlet For Black Lake Mineral Leases, Saskatchewan.**

Technical Highlights (From 2008 R. Chernish Technical Report)

Original discovery of radioactive pegmatites at Charlebois Lake and Paisley Lake in 1949.

Intermittent exploration from the 1940's to the 1970's. Historical results include: **"0.15% U<sub>3</sub>O<sub>8</sub> over 3m in a 122m long pegmatite and 0.08% U<sub>3</sub>O<sub>8</sub> over 9.8m. A 300 pound sample was submitted for assay and returned a reported value of 0.78% U<sub>3</sub>O<sub>8</sub>."**

2 rounds of exploration by Manson Creek Resources Ltd (predecessor Company to Jade Leader Corp.) in 2007, including 1,500 meters of drilling in 5 holes.

The A zone (Paisley Lake) "is a 200 meter by 250 meter zone containing significant volumes of radioactive pegmatite. **Five grab samples collected from the outcropping pegmatites returned values ranging from 0.108% U<sub>3</sub>O<sub>8</sub> to 0.589% U<sub>3</sub>O<sub>8</sub>. The pegmatites within the A zone locally contain abundant molybdenum (Mo) with assay values ranging from 0.077% to 0.302% Mo."**

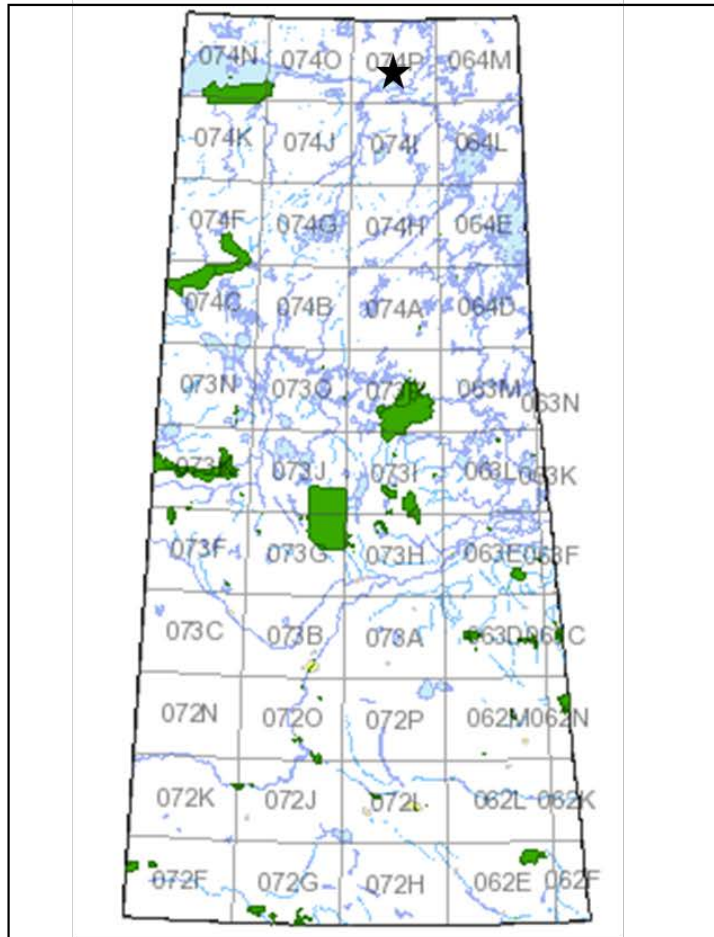
The 2007 scout drilling program returned the following results:

"The drill program successfully intersected significant volumes of pegmatite hosted uranium mineralization along the multi-kilometer radiometric anomaly at Charlebois Lake. **Intervals of 0.179% U<sub>3</sub>O<sub>8</sub> over 2.51 meters and 0.118% U<sub>3</sub>O<sub>8</sub> over 1.97 meters** were drilled 480 meters apart along the strike of the Charlebois Lake Zone. Each of these intervals is hosted within broader, moderately mineralized, areas of 0.080% U<sub>3</sub>O<sub>8</sub> over 6.52 meters and 0.40% U<sub>3</sub>O<sub>8</sub> over 11.86 meters respectively."

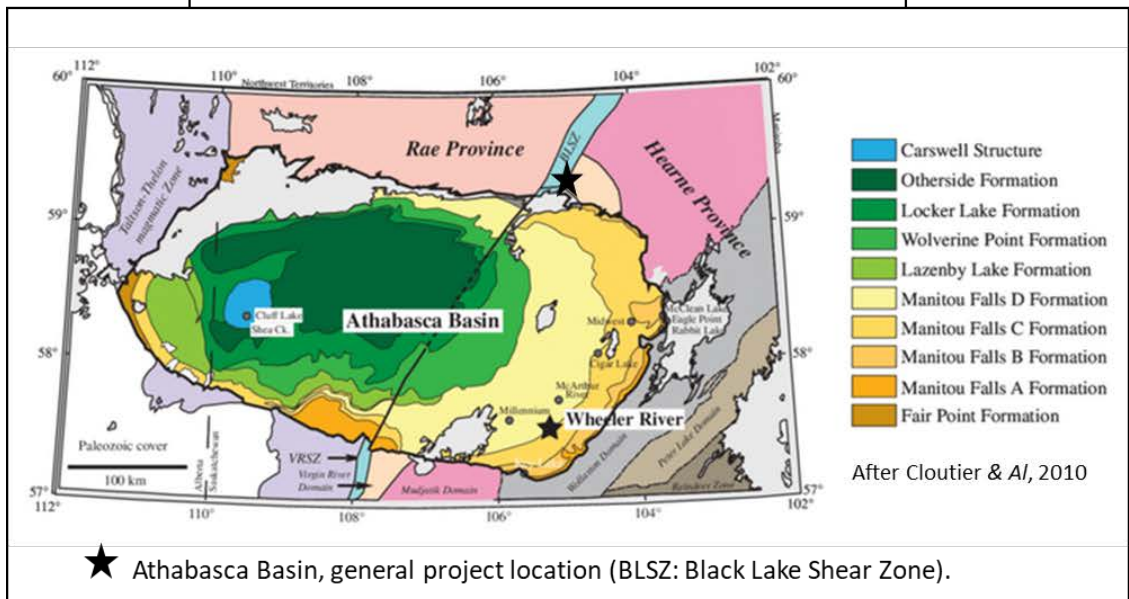
"The three drill holes that tested the A zone, located near Black Lake, also intercepted significant volumes of mineralized granite/pegmatite. **Significant intercepts included 0.010% U<sub>3</sub>O<sub>8</sub> over 1.50 meters, 0.012% U<sub>3</sub>O<sub>8</sub> over 0.85 meters, and 0.012% U<sub>3</sub>O<sub>8</sub> over 0.71 meters."**

# Black Lake Uranium (+/-Molybdenum) Leases, Saskatchewan

## Information pamphlet For Black Lake Mineral Leases, Saskatchewan.



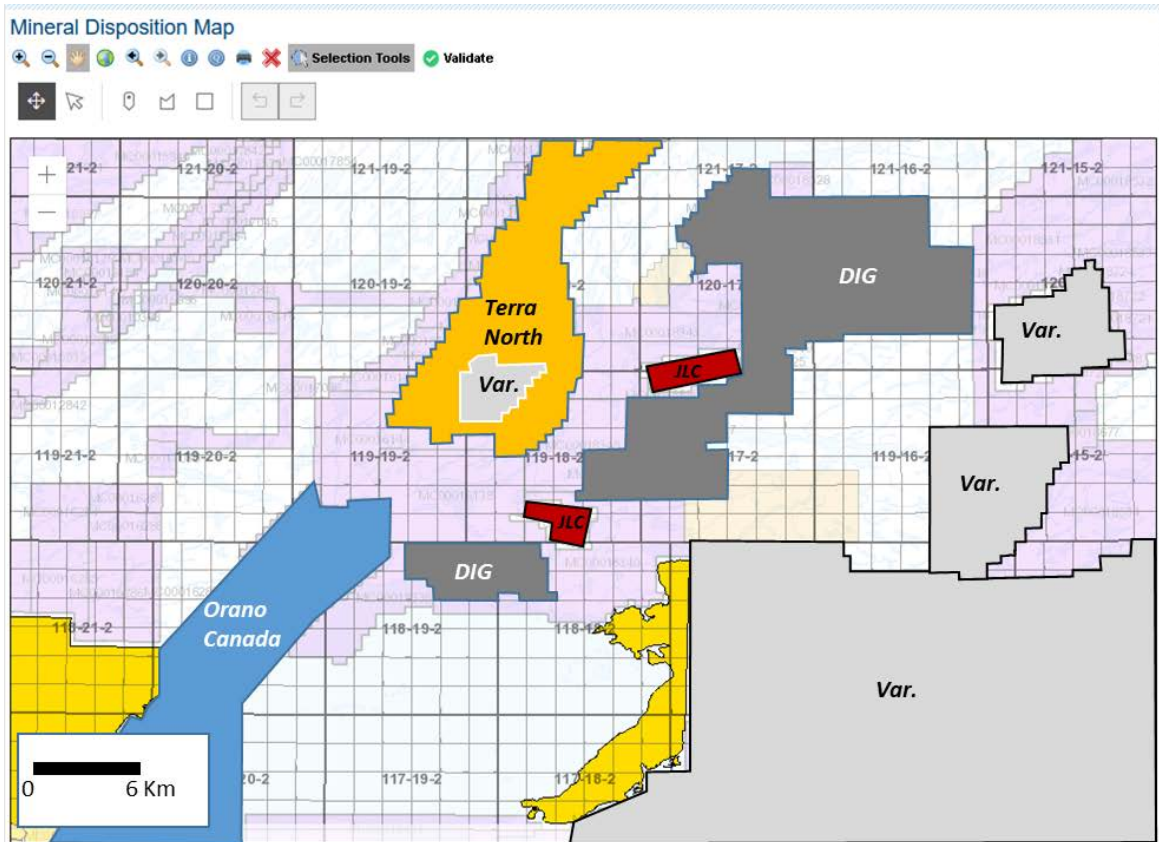
★ Province of Saskatchewan, general project location



# Black Lake Uranium (+/-Molybdenum) Leases, Saskatchewan

## Information pamphlet For Black Lake Mineral Leases, Saskatchewan.

### Area General Claims Map And Activity



JLC- Jade Leader Mineral claims:



S-108963, 741 Hectares (Charlebois Lake Zone)

S-108967, 549 Hectares (Paisley Lake, A Zone)

Other area participants:

Orano Canada, FIR Island project

Terra North- Terra Balcanica Resources Corp., Snowbird project.

DIG- Doctors Investment Group

Var.-blocks with variable private ownership and lapsed tenures

Last updated from public sources: May 5, 2026

Note: All current tenures should be verified with Saskatchewan, Mineral Disposition Map (<https://mars.isc.ca>)

# Black Lake

## Project technical documentation/bibliography.

Bibliography/Data on hand for the Black Lake Leases

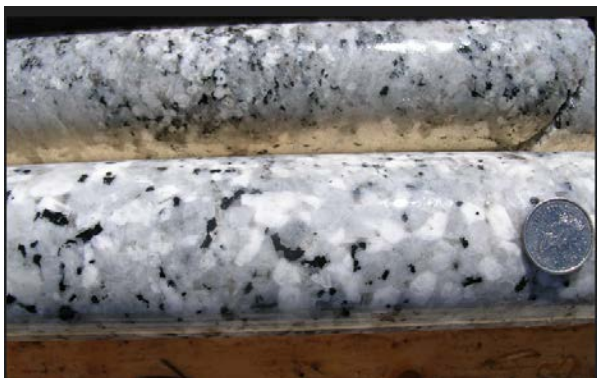
-Extensive historical regional geology/geophysical reports

-2007 technical assessment report and digital data archives for rock sampling, drilling and scintillometer surveys. R. Chernish, P.Geol, "The 2007 geological investigation and diamond drilling on the Black Lake mineral property", February 2008 (amended April 17, 2008)

-Digital archives, photographed core



Charlebois Lake Drilling on  
outcropping mineralized zone



Charlebois Lake Drilling,  
Mineralized pegmatites

For more information, please contact, J.P Jutras, P.Geol.  
President, Jade Leader Corp TSXV:JADE at [jp@gold.ca](mailto:jp@gold.ca)